

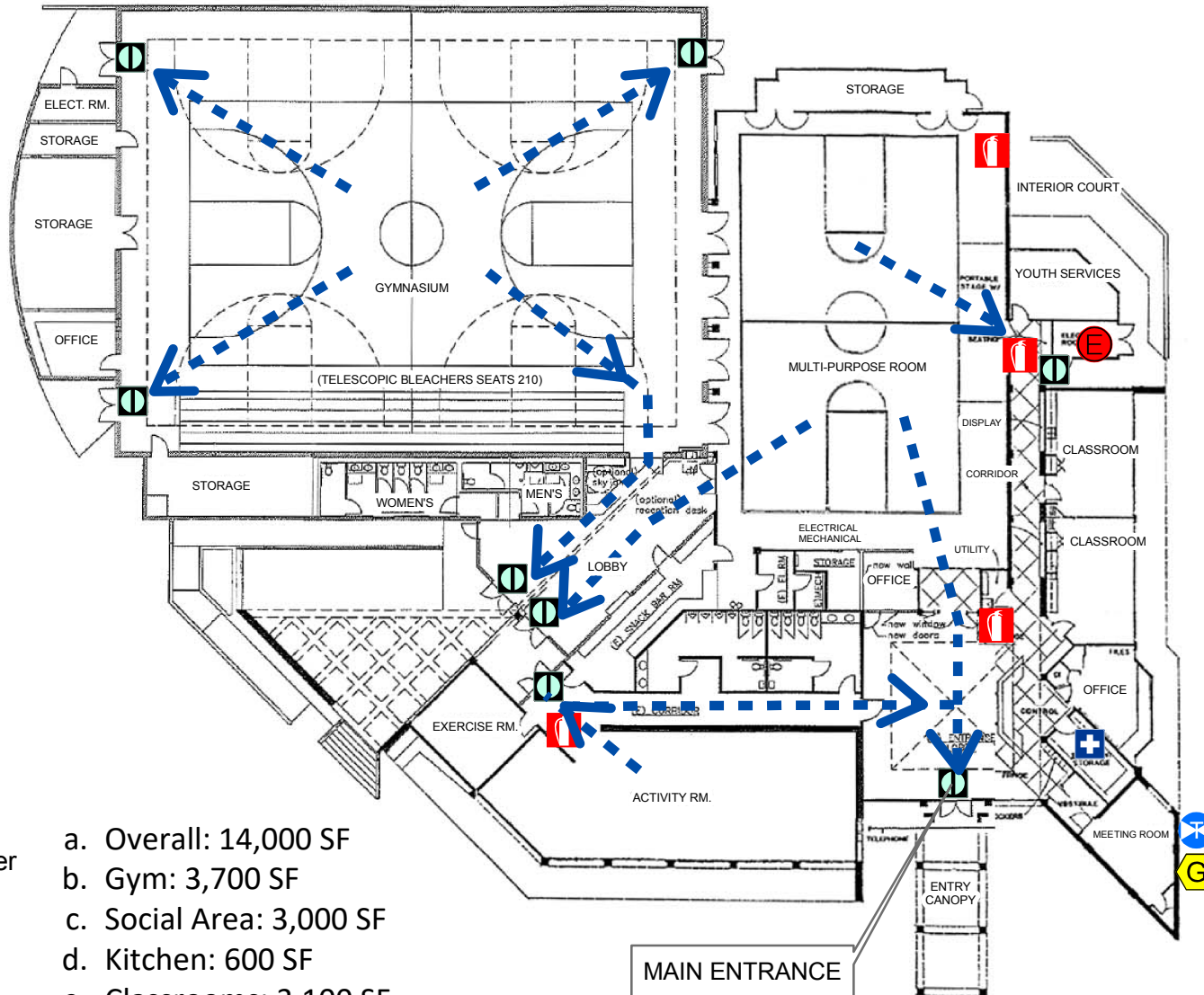
## Request for Proposals/Qualifications for Custodial Services at Various Park Facilities Answer to Question #1

The square footages listed here are approximate. Precise measurements, details on floor materials, wall treatments, or other details are the responsibility of the proposer. Maps are on the following pages.

<b>Alex Fiore Thousand Oaks Teen Center</b>
<ul style="list-style-type: none"> <li>a. Overall: 14,000 SF</li> <li>b. Gym: 3,700 SF</li> <li>c. Social Area: 3,000 SF</li> <li>d. Kitchen: 600 SF</li> <li>e. Classrooms: 3,100 SF</li> <li>f. Restrooms: 500 SF</li> <li>g. Office: 1,200 SF</li> </ul>
<b>Borchard Community Center</b>
<ul style="list-style-type: none"> <li>a. Overall: 13,000 SF</li> <li>b. Gym: 4,500 SF</li> <li>c. Classrooms: 5,200 SF</li> <li>d. Restrooms: 1,400 SF</li> <li>e. Office: 1,000 SF</li> </ul>
<b>Community Pool at CLU</b>
<ul style="list-style-type: none"> <li>a. Overall: 1,000 SF</li> <li>b. Restrooms: 800 SF</li> <li>c. Office: 200 SF</li> </ul>
<b>Conejo Community Center</b>
<ul style="list-style-type: none"> <li>a. Overall: 8,000 SF</li> <li>b. Main Room: 3,000 SF</li> <li>c. Classrooms: 1,800 SF</li> <li>d. Restrooms/Hall: 1,600 SF</li> <li>e. Office: 800 SF</li> </ul>
<b>Conejo Creek South Park</b>
<ul style="list-style-type: none"> <li>a. Restrooms: 1,600 SF</li> </ul>
<b>Dos Vientos Community Center</b>
<ul style="list-style-type: none"> <li>a. Overall: 13,000 SF</li> <li>b. Gym: 4,500 SF</li> <li>c. Classrooms 5,200 SF</li> <li>d. Restrooms: 1,400 SF</li> <li>e. Office: 1,000 SF</li> </ul>

<b>Goebel Adult Community Center</b>
<ul style="list-style-type: none"> <li>a. Overall: 17,000 SF</li> <li>b. Multi-purpose: 3,000 SF</li> <li>c. Social and Hallway: 2,400 SF</li> <li>d. Classrooms: 6,000 SF</li> <li>e. Restrooms: 800 SF</li> <li>f. Office: 2,000 SF</li> </ul>
<b>North Ranch Playfield</b>
<ul style="list-style-type: none"> <li>a. Restrooms: 700 SF</li> </ul>
<b>Old Meadows Center</b>
<ul style="list-style-type: none"> <li>a. Overall: 3,700 SF</li> <li>b. Upstairs Dance Room: 800 SF</li> <li>c. Classrooms: 1,800 SF</li> <li>d. Restrooms: 500 SF</li> <li>e. Office: 500 SF</li> </ul>
<b>Rancho Conejo Playfield</b>
<ul style="list-style-type: none"> <li>a. Restrooms: 700 SF</li> </ul>
<b>Sapwi Trails Community Park</b>
<ul style="list-style-type: none"> <li>a. Restrooms: 700 SF</li> </ul>
<b>Thousand Oaks Community Center</b>
<ul style="list-style-type: none"> <li>a. Overall: 16,500 SF</li> <li>b. Gym: 6,500 SF</li> <li>c. Classrooms: 4,900 SF</li> <li>d. Restrooms: 2,100 SF</li> <li>e. Office: 1,800 SF</li> </ul>

**ALEX FIORE THOUSAND OAKS TEEN CENTER**  
**1375 E. Janss Road**  
**Thousand Oaks, CA 91360**  
**(805) 494-5156**



**Legend**

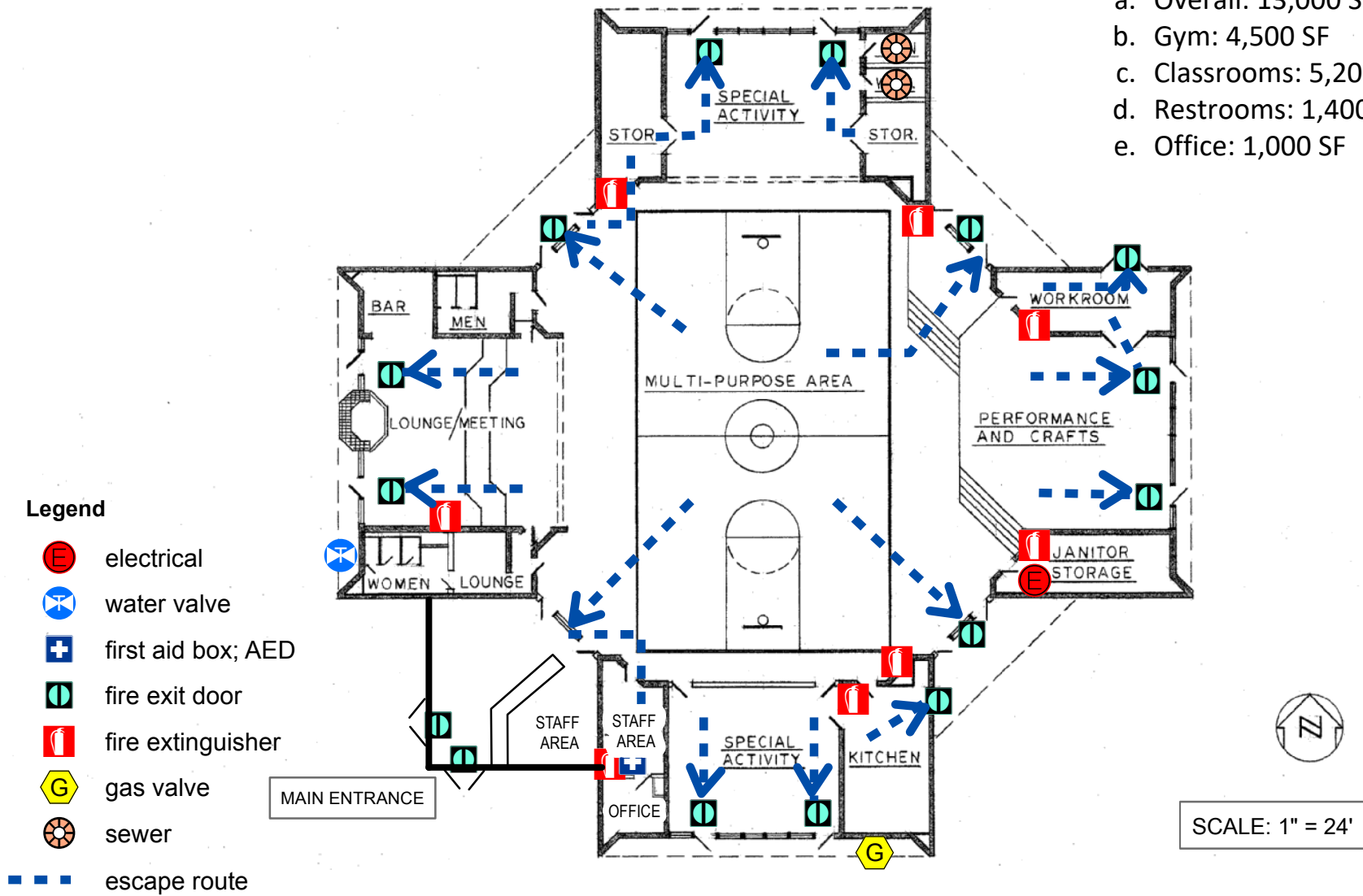
-  fire exit
-  electrical
-  fire extinguisher
-  first aid box
-  gas
-  water valve
-  escape route

- a. Overall: 14,000 SF
- b. Gym: 3,700 SF
- c. Social Area: 3,000 SF
- d. Kitchen: 600 SF
- e. Classrooms: 3,100 SF
- f. Restrooms: 500 SF
- g. Office: 1,200 SF



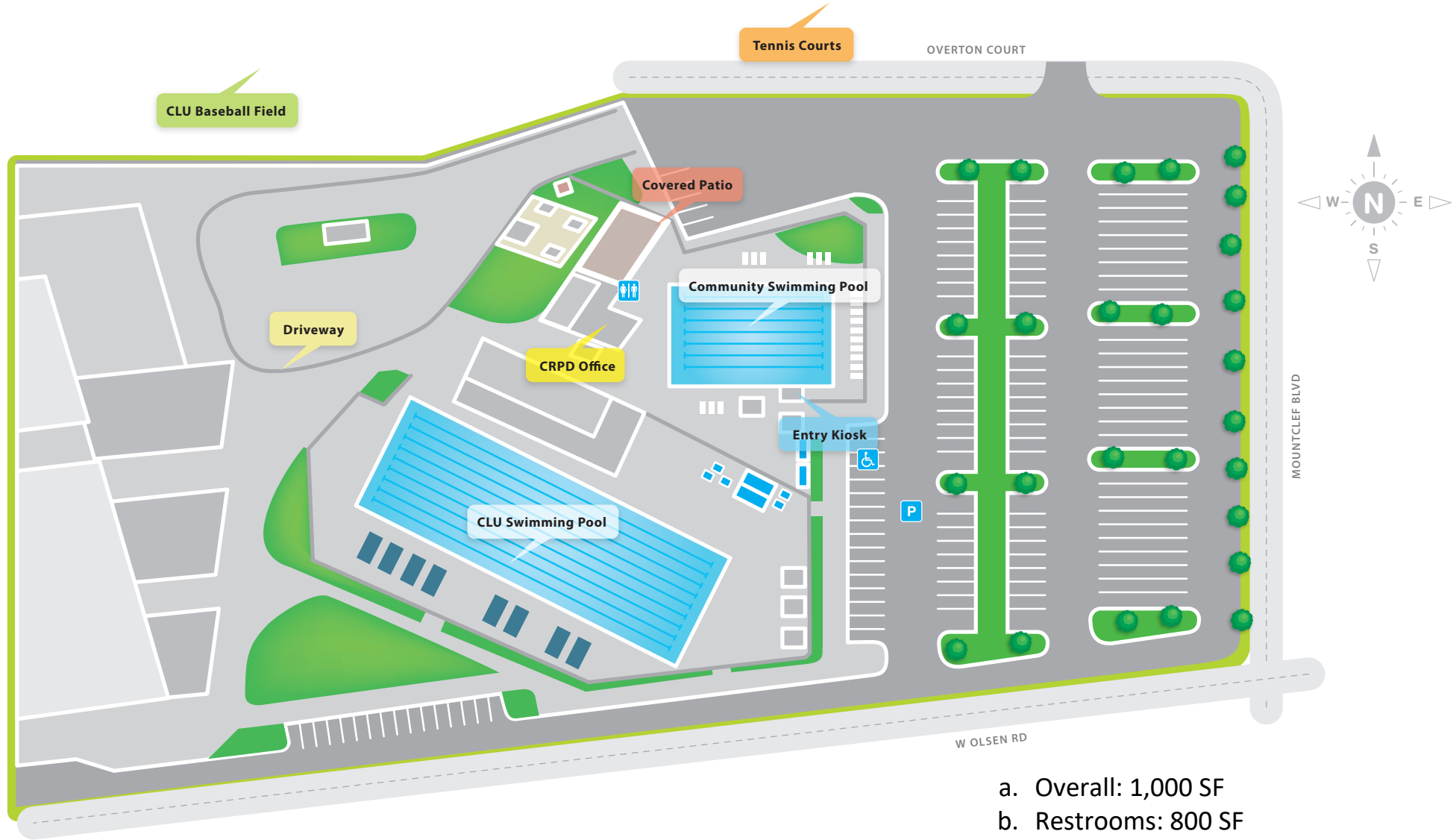
**BORCHARD PARK COMMUNITY CENTER**  
**190 Reino Road**  
**Newbury Park 91320**  
**(805) 381-2791**

- a. Overall: 13,000 SF
- b. Gym: 4,500 SF
- c. Classrooms: 5,200 SF
- d. Restrooms: 1,400 SF
- e. Office: 1,000 SF



# Community Pool at CLU

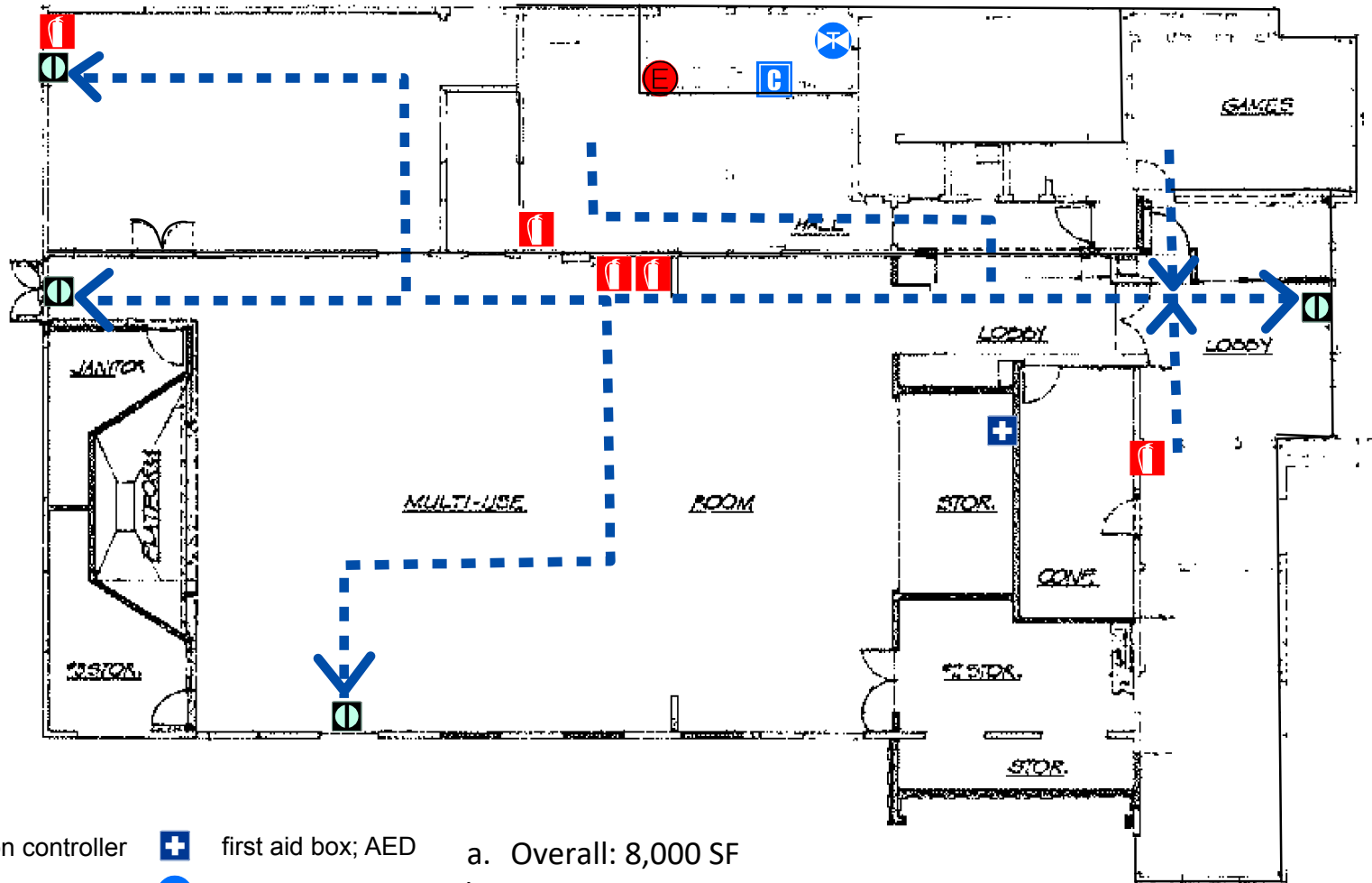
100 Overton Court, Thousand Oaks CA 91360 • (805) 241-0894



- a. Overall: 1,000 SF
- b. Restrooms: 800 SF
- c. Office: 200 SF



**CONEJO COMMUNITY CENTER**  
 1175 Hendrix Avenue  
 Thousand Oaks, CA 91360  
 (805) 495-2163



**Legend**

- |                       |                    |
|-----------------------|--------------------|
| irrigation controller | first aid box; AED |
| electrical            | water valve        |
| fire exit             | fire extinguisher  |
| escape route          |                    |

- a. Overall: 8,000 SF
- b. Main Room: 3,000 SF
- c. Classrooms: 1,800 SF
- d. Restrooms/Hall: 1,600 SF
- e. Office: 800 SF

Not to Scale



# Conejo Creek South Park

1300 E. Janss Road, Thousand Oaks, CA 91362

(southeast corner, 23 Freeway & Janss Road)



**For Outdoor Reservation Inquiries Call (805) 495-6471**

## **Reservable Outdoor Areas**

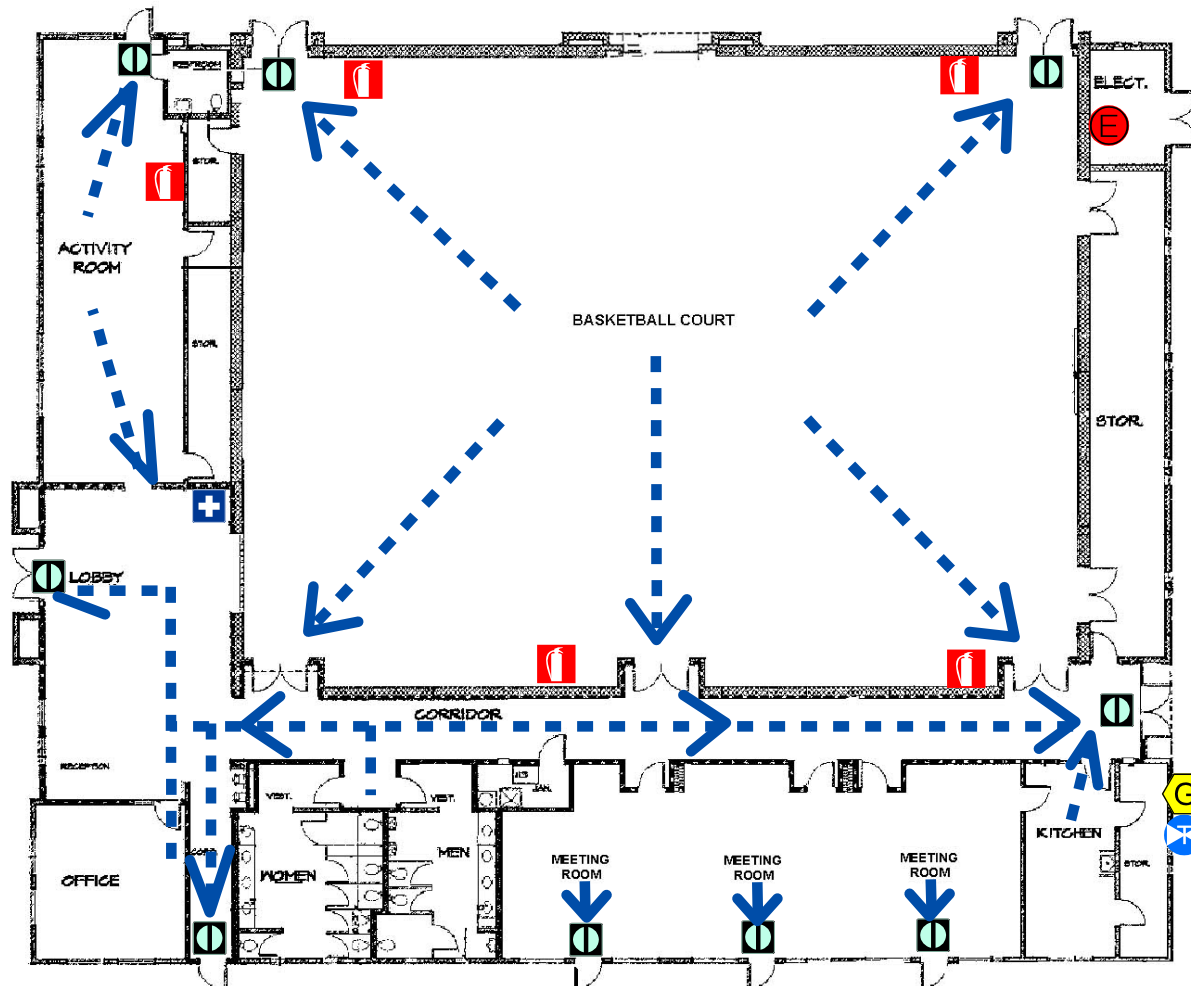
### **Lighted Athletic Fields**

Athletic fields 1 to 11








Baseball Field(not lighted)

a. Restrooms: 1,600 SF

**DOS VIENTOS COMMUNITY CENTER**  
4801 Borchard Road  
Newbury Park, CA 91320



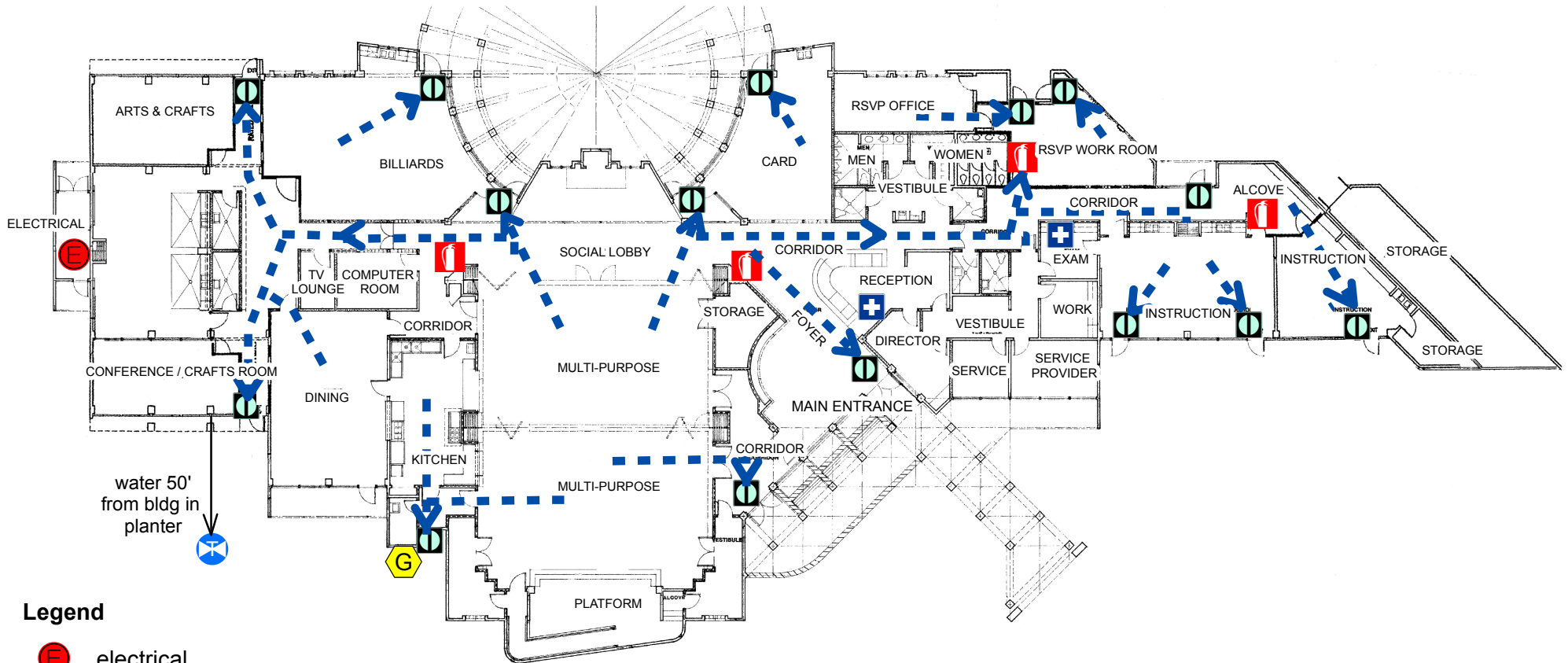
**Legend**

-  electrical
-  gas
-  fire extinguisher
-  first aid box; AED
-  water valve
-  fire exit
-  escape route







- a. Overall: 13,000 SF
- b. Gym: 4,500 SF
- c. Classrooms: 5,200 SF
- d. Restrooms: 1,400 SF
- e. Office: 1,000 SF



**GOEBEL ADULT COMMUNITY CENTER**  
**1385 E. Janss Road**  
**Thousand Oaks, CA 91362**  
**(805) 381-2744**



### Legend

- |  |                    |
|--|--------------------|
|  | electrical         |
|  | fire exit          |
|  | fire extinguisher  |
|  | first aid box; AED |
|  | gas                |
|  | water valve        |

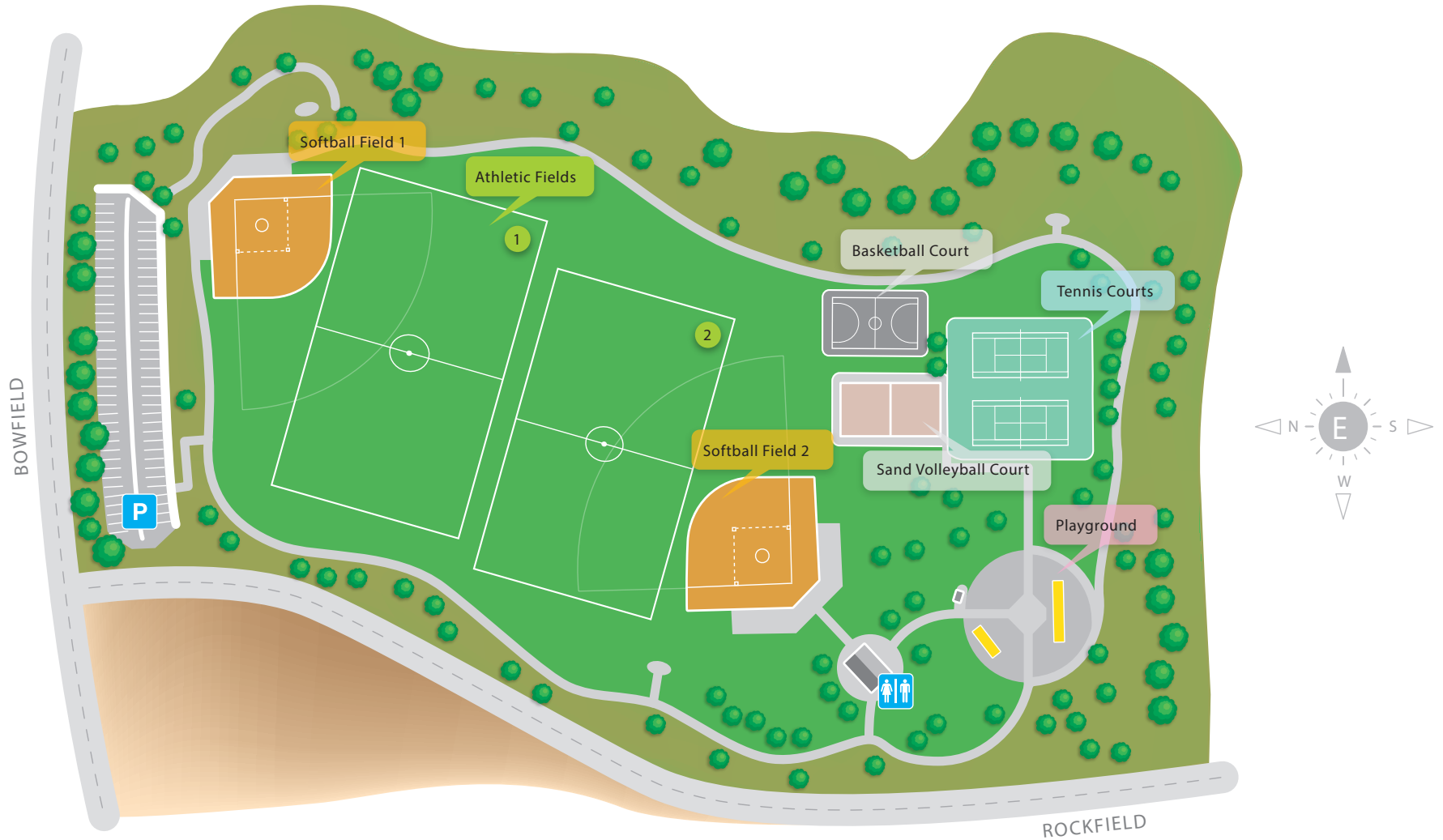
- a. Overall: 17,000 SF
- b. Multi-Purpose: 3,000 SF
- c. Social & Hallway: 2,400 SF
- d. Classrooms: 6,000 SF
- e. Restrooms: 800 SF
- f. Office: 2,000 SF



# North Ranch Playfield

952 Rockfield Street, Thousand Oaks, CA 91362

(101 Freeway, exit Lindero Canyon, north)



**For Outdoor Reservation Inquiries Call (805) 495-6471**

## Reservable Outdoor Areas

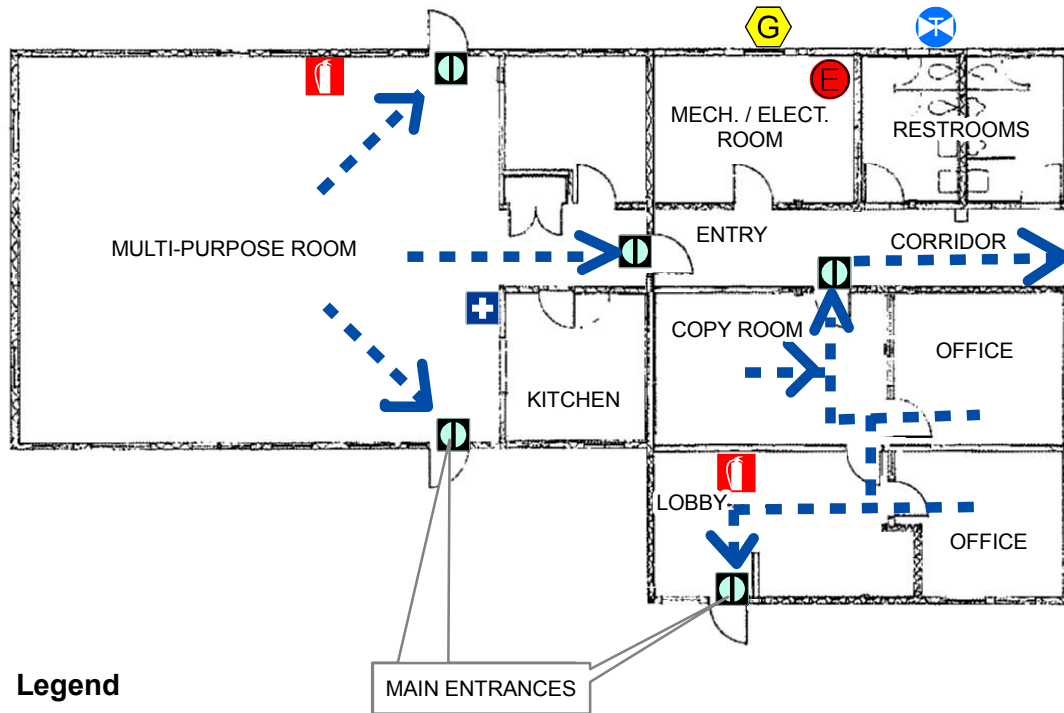
### **Lighted Fields**

Athletic Fields 1 & 2  
Softball Fields 1 & 2





a. Restrooms: 700 SF



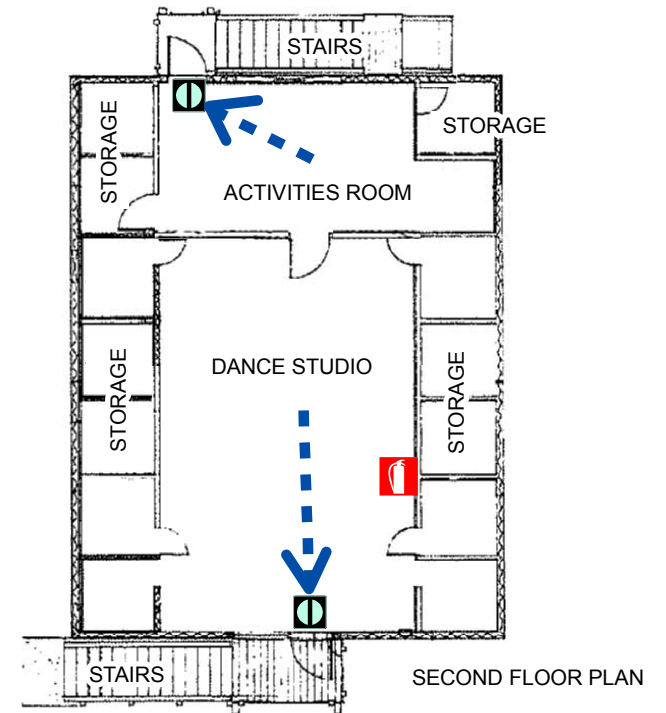
**OLD MEADOWS CENTER**  
**1600 Marview Drive**  
**Thousand Oaks, CA 91362**  
**(805) 381-2739**



**Legend**

-  electrical
-  fire exit
-  fire extinguisher
-  first aid box; AED
-  gas
-  water valve
-  escape route

- a. Overall: 3,700 SF
- b. Upstairs Dance Room: 800 SF
- c. Classrooms: 1,800 SF
- d. Restrooms: 500 SF
- e. Office: 500 SF





# Rancho Conejo Playfield

950 N. Ventu Park Road, Thousand Oaks, CA 91360

(101 Freeway, exit Ventu Park)



**For Outdoor Reservation Inquiries Call (805) 495-6471**

**Reservable Outdoor Areas**

Athletic Fields 1 & 2

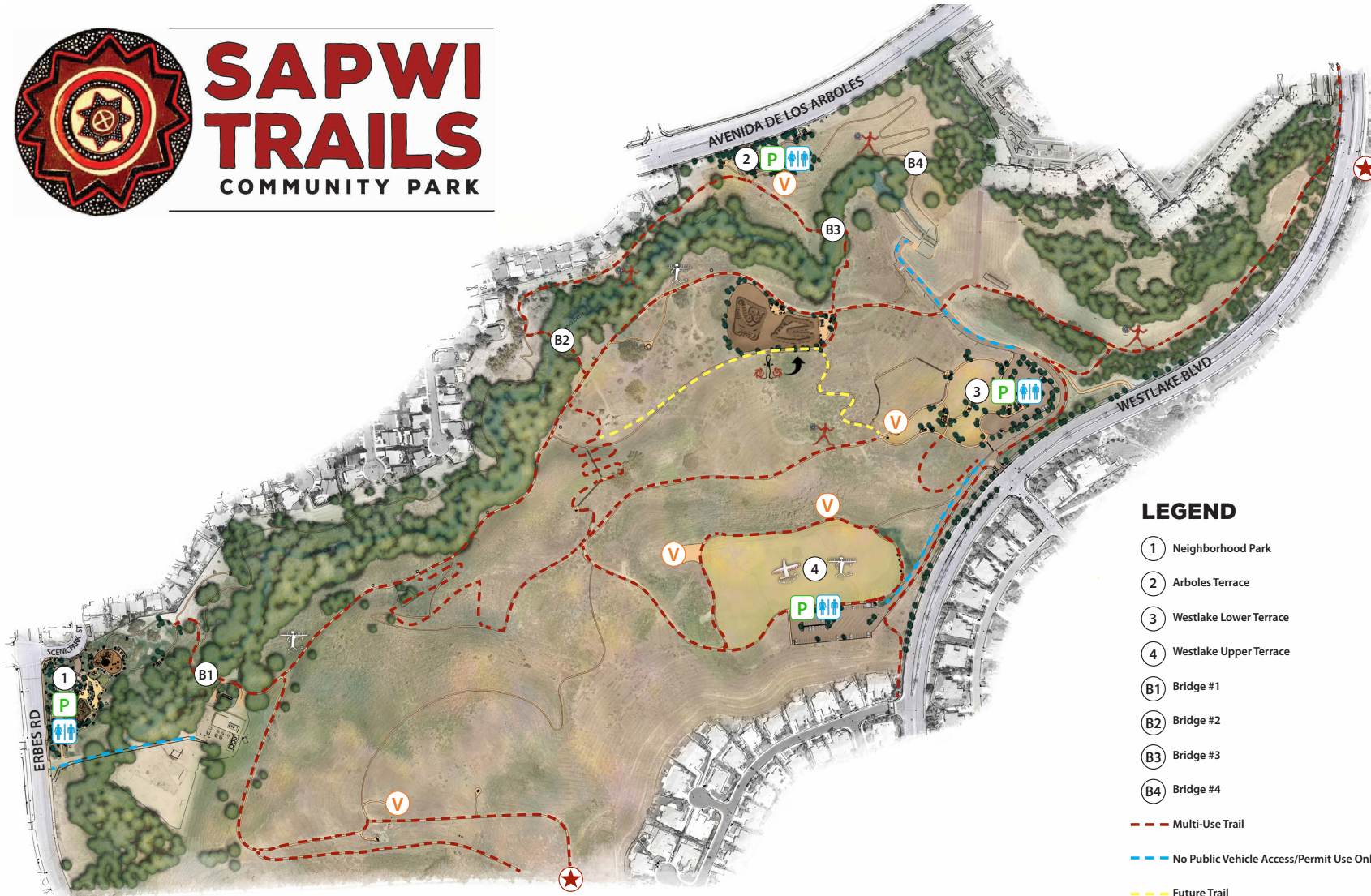
Softball Fields 1 & 2

a. Restrooms: 700 SF



# SAPWI TRAILS

COMMUNITY PARK



## Did You Know...

Sapwi is the name of a Chumash village once located in the general vicinity of the park property. In the Chumash language, "Sapwi" can be interpreted to mean "House of the Deer". Sapwi Trails Community Park's name revives an historically documented name and honors the significance of the first people known to inhabit what we call the Conejo Valley.

## LEGEND

- 1 Neighborhood Park
- 2 Arboles Terrace
- 3 Westlake Lower Terrace
- 4 Westlake Upper Terrace
- B1 Bridge #1
- B2 Bridge #2
- B3 Bridge #3
- B4 Bridge #4

--- Multi-Use Trail

--- No Public Vehicle Access/Permit Use Only

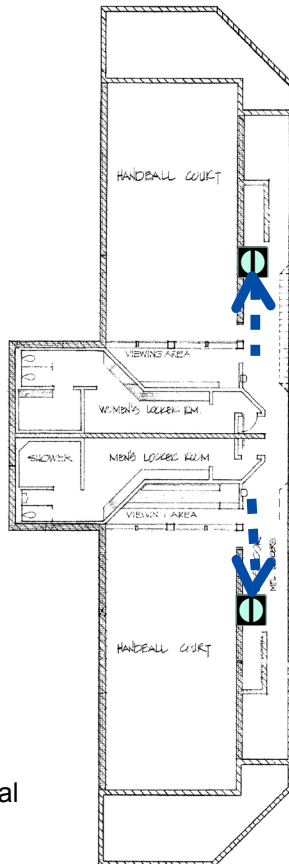
--- Future Trail

- Disc Golf Course
- Cross Country Course
- Bike Park
- Glider Area
- Trailhead Parking Lot + Picnic Area
- Restroom + Drinking Fountain
- Vista Area
- Connection to Open Space/Park Facility

a. Restrooms: 700 SF

**THOUSAND OAKS COMMUNITY CENTER**  
**2525 N. Moorpark Road**  
**Thousand Oaks, CA 91360**  
**(805) 381-2793**

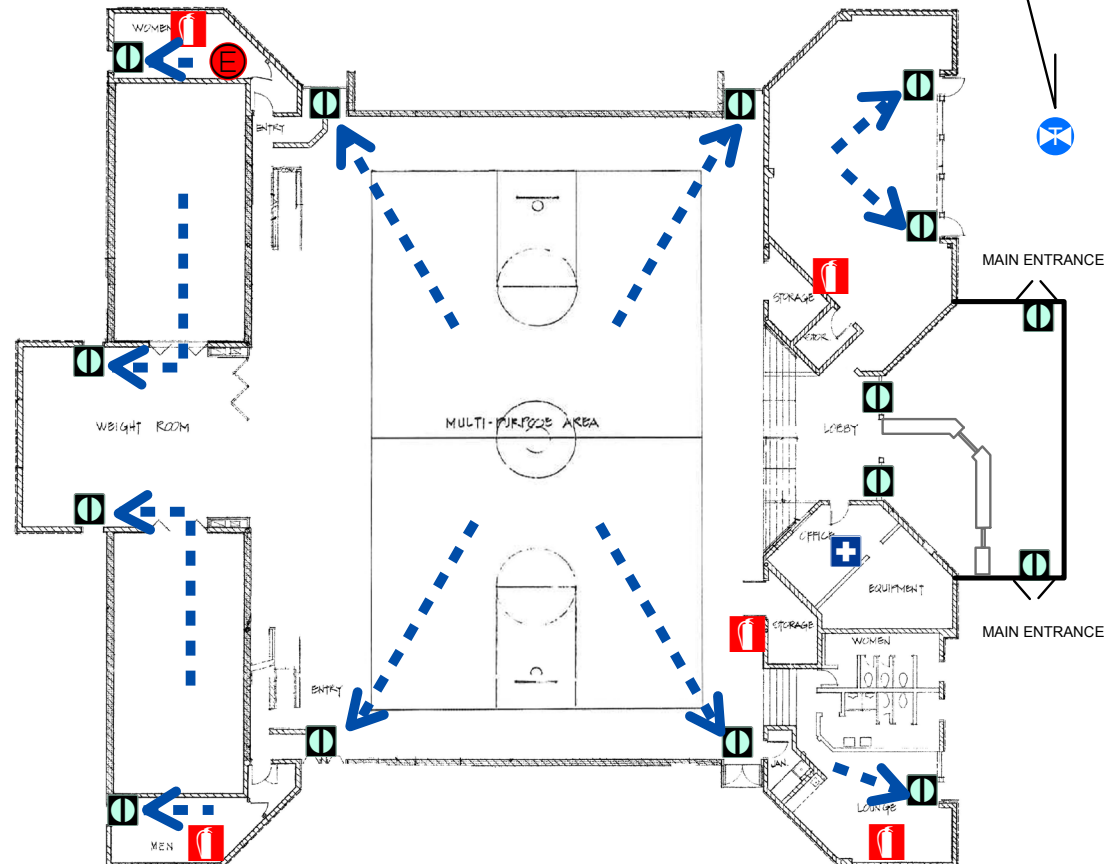
BACKFLOW AT CURB  
 MOORPARK RD



**Legend**

- electrical
- fire exit
- fire extinguisher
- first aid box; AED
- water valve
- escape route

\* NO GAS AT THIS FACILITY



- a. Overall: 16,500 SF
- b. Gym: 6,500 SF
- c. Classrooms: 4,900 SF
- d. Restrooms: 2,100 SF
- e. Office: 1,800 SF

