



The play components identified on this plan are IPEMA certified. (Unless model number is preceded with \*) The use and layout of these components conform to the requirements of ASTM F1487. To verify product certification, visit [www.ipema.org](http://www.ipema.org)

THIS LAYOUT INCLUDES FITNESS EQUIPMENT FOR USERS AGES 13 AND OLDER. IT IS THE MANUFACTURER'S OPINION AND INTENT THAT THE USE AND LAYOUT OF THESE COMPONENTS CONFORM WITH THE AMERICAN SOCIETY FOR TESTING AND MATERIALS (ASTM) STANDARD, ASTM F3101.

THIS PLAY AREA & PLAY EQUIPMENT IS DESIGNED FOR AGES 2-12 YEARS UNLESS OTHERWISE NOTED ON PLAN.

IT IS THE MANUFACTURER'S OPINION THAT THIS PLAY AREA DOES CONFORM TO THE A.D.A. ACCESSIBILITY STANDARDS, ASSUMING AN ACCESSIBLE PROTECTIVE SURFACING IS PROVIDED, AS INDICATED, OR WITHIN THE ENTIRE USE ZONE.

THIS CONCEPTUAL PLAN WAS BASED ON INFORMATION AVAILABLE TO US. PRIOR TO CONSTRUCTION, DETAILED SITE INFORMATION INCLUDING SITE DIMENSIONS, TOPOGRAPHY, EXISTING UTILITIES, SOIL CONDITIONS, AND DRAINAGE SOLUTIONS SHOULD BE OBTAINED, EVALUATED, & UTILIZED IN THE FINAL DESIGN. PLEASE VERIFY ALL DIMENSIONS OF PLAY AREA, SIZE, ORIENTATION, AND LOCATION OF ALL EXISTING UTILITIES, EQUIPMENT, AND SITE FURNISHINGS PRIOR TO ORDERING. SLIDES SHOULD NOT FACE THE HOT AFTERNOON SUN.

CHOOSE A PROTECTIVE SURFACING MATERIAL THAT HAS A CRITICAL HEIGHT VALUE TO MEET THE MAXIMUM FALL HEIGHT FOR THE EQUIPMENT (REF. ASTM F1487 STANDARD CONSUMER SAFETY PERFORMANCE SPECIFICATION FOR PLAYGROUND EQUIPMENT FOR PUBLIC USE, SECTION 8 CURRENT REVISION). THE SUBSURFACE MUST BE WELL DRAINED. IF THE SOIL DOES NOT DRAIN NATURALLY IT MUST BE TILED OR SLOPED 1/8" TO 1/4" PER FOOT TO A STORM SEWER OR A "FRENCH DRAIN".

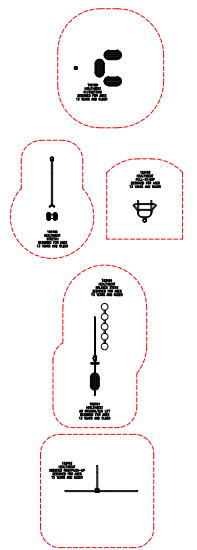
ACCESSIBLE/PROTECTIVE SURFACING TO BE A COMBINATION OF UNITARY AND LOOSE FILL MATERIALS.

IT IS THE MANUFACTURER'S OPINION AND INTENT THAT THE LAYOUT OF THESE COMPONENTS CONFORM WITH THE U.S. CONSUMER PRODUCT SAFETY COMMISSION'S (CPSC) "HANDBOOK FOR PUBLIC PLAYGROUND SAFETY".

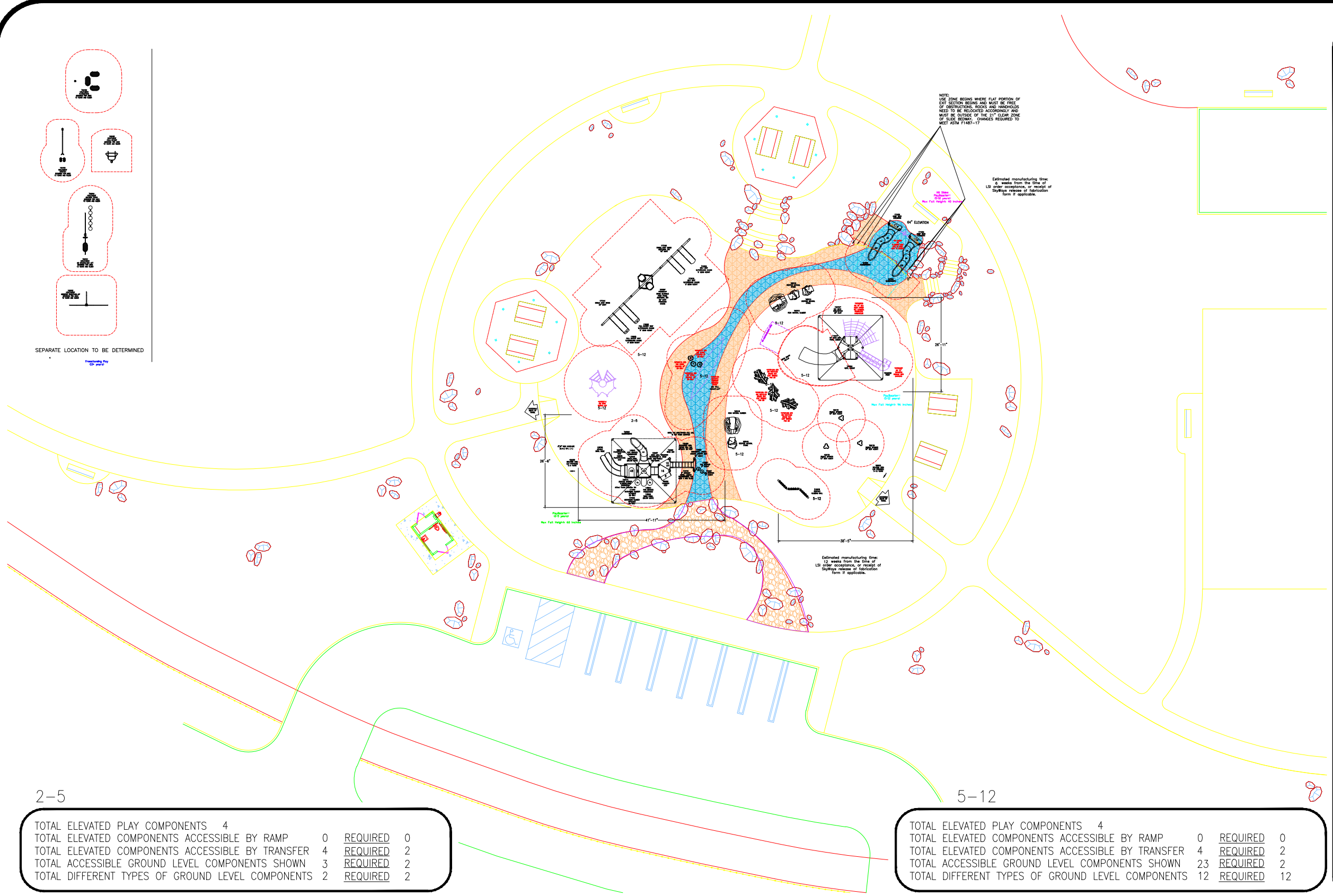
DESIGNED BY:  
SS

COPYRIGHT: 7/20/2020  
LANDSCAPE STRUCTURES, INC.  
601 7th STREET SOUTH - P.O. BOX 198  
DELANO, MINNESOTA 55328  
PH: 1-800-328-0035 FAX: 1-763-972-6091

8/28/18	1127936-01-07	SS
6/15/18	1127936-01-02	SS
5/22/17	1127936-01-01	SS
Date	Previous Drawing #	Initials



SEPARATE LOCATION TO BE DETERMINED



NOTE:  
USE ZONE BEGINS WHERE FLAT PORTION OF  
EXIT SECTION BEGINS AND MUST BE FREE  
OF OBSTRUCTIONS. ROCKS AND HANDLES  
NEED TO BE RELOCATED ACCORDINGLY AND  
MUST BE OUTSIDE OF THE 21" CLEAR ZONE  
OF SLIDE BEWAY. CHANGES REQUIRED TO  
MEET ASTM F1487-17

Estimated manufacturing time:  
8 weeks from the time of  
LO order acceptance, or receipt of  
Shiraya release of fabrication  
form if applicable.

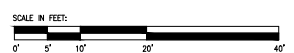
Estimated manufacturing time:  
12 weeks from the time of  
LO order acceptance, or receipt of  
Shiraya release of fabrication  
form if applicable.

2-5

TOTAL ELEVATED PLAY COMPONENTS	4		
TOTAL ELEVATED COMPONENTS ACCESSIBLE BY RAMP	0	REQUIRED	0
TOTAL ELEVATED COMPONENTS ACCESSIBLE BY TRANSFER	4	REQUIRED	2
TOTAL ACCESSIBLE GROUND LEVEL COMPONENTS SHOWN	3	REQUIRED	2
TOTAL DIFFERENT TYPES OF GROUND LEVEL COMPONENTS	2	REQUIRED	2

5-12

TOTAL ELEVATED PLAY COMPONENTS	4		
TOTAL ELEVATED COMPONENTS ACCESSIBLE BY RAMP	0	REQUIRED	0
TOTAL ELEVATED COMPONENTS ACCESSIBLE BY TRANSFER	4	REQUIRED	2
TOTAL ACCESSIBLE GROUND LEVEL COMPONENTS SHOWN	23	REQUIRED	2
TOTAL DIFFERENT TYPES OF GROUND LEVEL COMPONENTS	12	REQUIRED	12



Conejo Creek Southwest  
Thousand Oaks, CA

RecWest Outdoor  
Products, Inc.  
Scott Anderson

SYSTEM TYPE:  
PlayBooster  
DRAWING #:  
1127936-01-09





# Conejo Creek Southwest

1127936-01-09-03 • 07.23.2020





# Conejo Creek Southwest

1127936-01-09-01 • 07.22.2020





# Conejo Creek Southwest

1127936-01-09-02 • 07.22.2020





# Conejo Creek Southwest

1127936-01-09 • 06.16.2021

