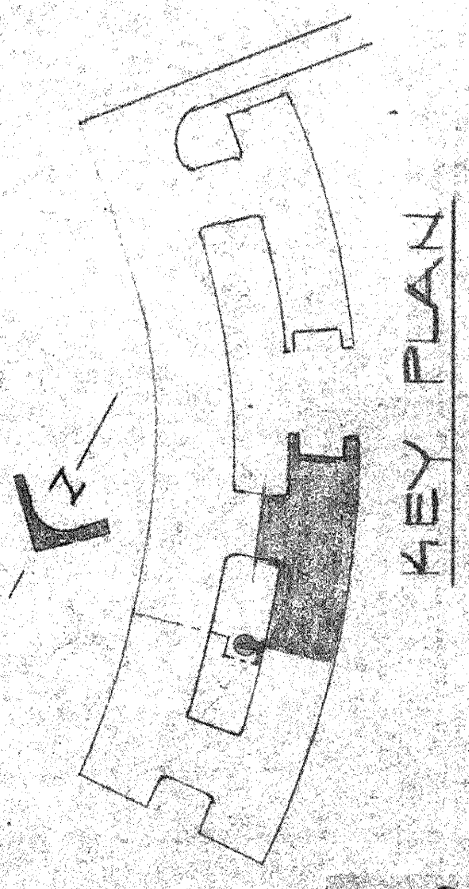
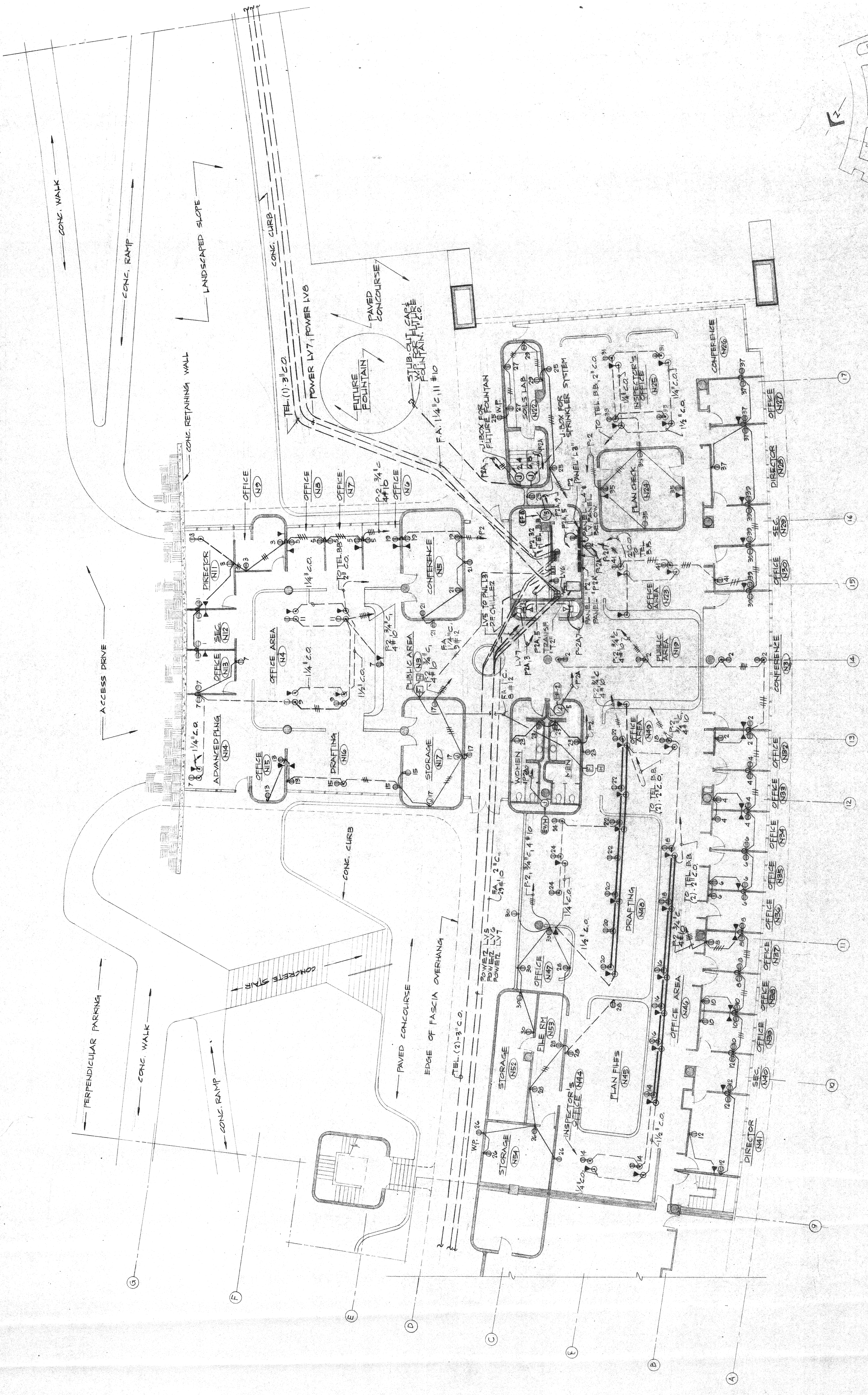


NOTE:  
 FOR ALL TELEPHONE OUTLETS, WHERE  
 POSSIBLE, ALL WIRING SHALL BE  
 RIGIDLY CONFINED TO THE WALLS  
 AND FLOOR SLABS. SEE ALSO GENERAL NOTES ON SHEET E1.



POWER PLAN - NORTH BLDG, SOUTH END  
 SCALE 1/8" = 1'-0"

Baylock Engineers  
 Mechanical and Electrical Engineering  
 1000 Wilkes Street, San Diego, Calif. 92110  
 (714) 281-5680