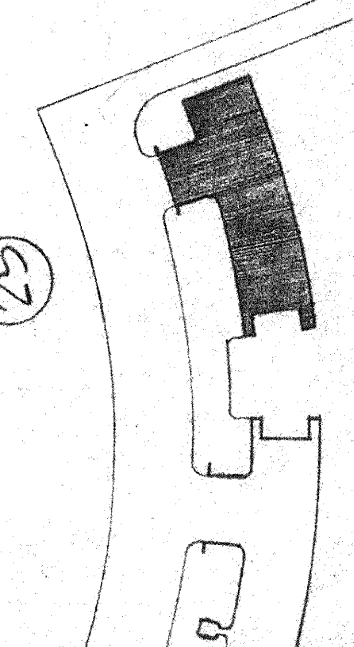
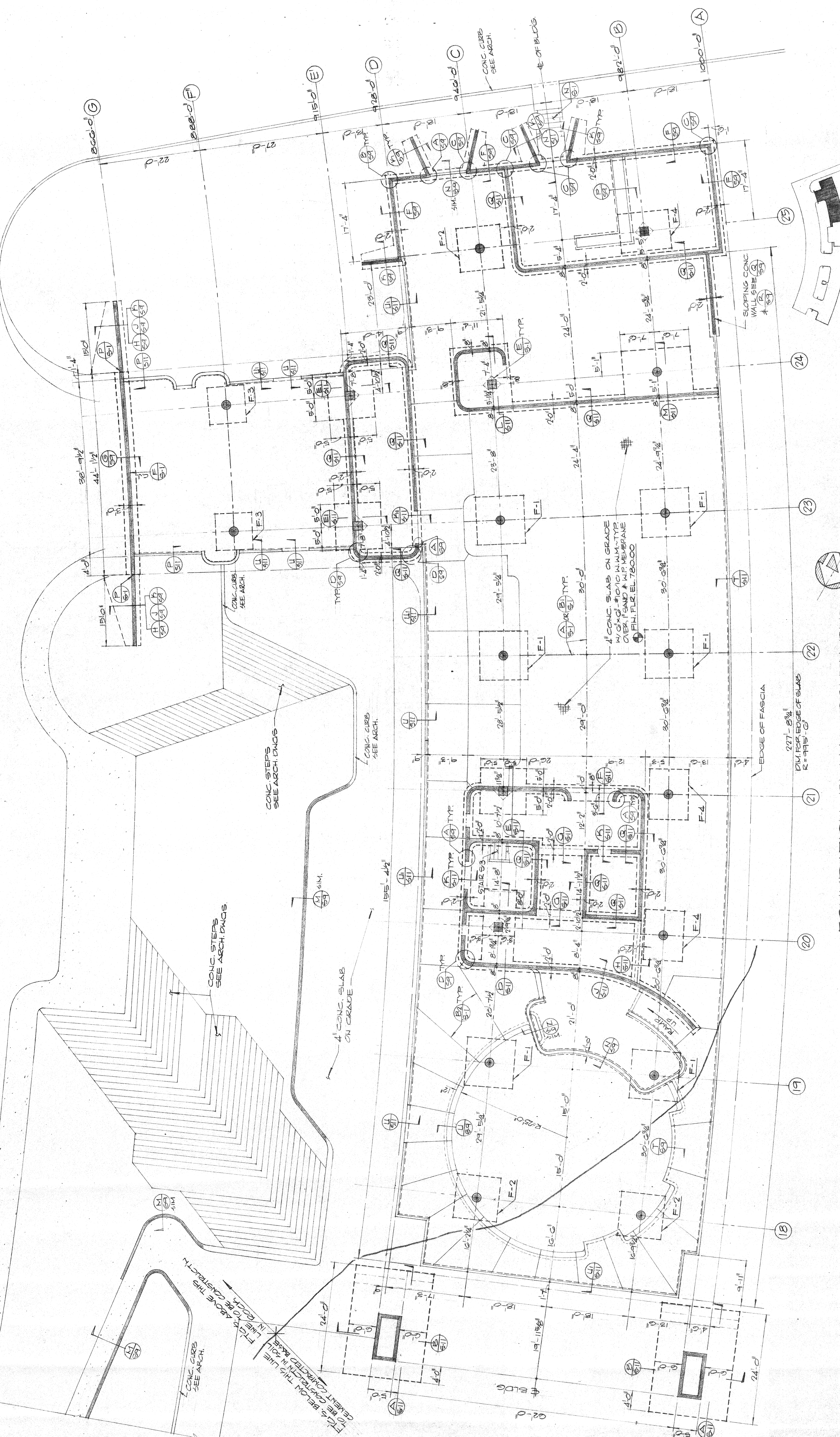
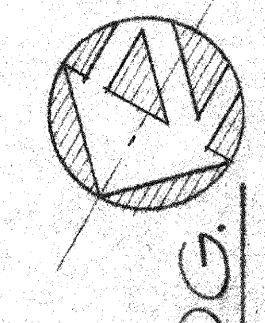


- NOTES:
1. FOR COLUMN AND COLUMN FOOTINGS, SEE SCHEDULE SHEET S 9
  2. FOR STAIR DETAILS, SEE SHEET S 10
  3. FOR R.C. WALLS & FOUNDATIONS, SEE SHEETS S 9, S 10 & S 11.
  4. FOR R.C. RETAINING WALLS, SEE SHEET S 9
  5. FOR EXT. SLAB & CONC. WALLS, SEE ARCH. PLANS
  6. FOR MACHINERY BASES, SIZE & LOC. SEE MECH. DWGS.



KEY PLAN



FOUNDATION PLAN • SOUTH BLDG.

SCALE: 1/8" = 1'-0"