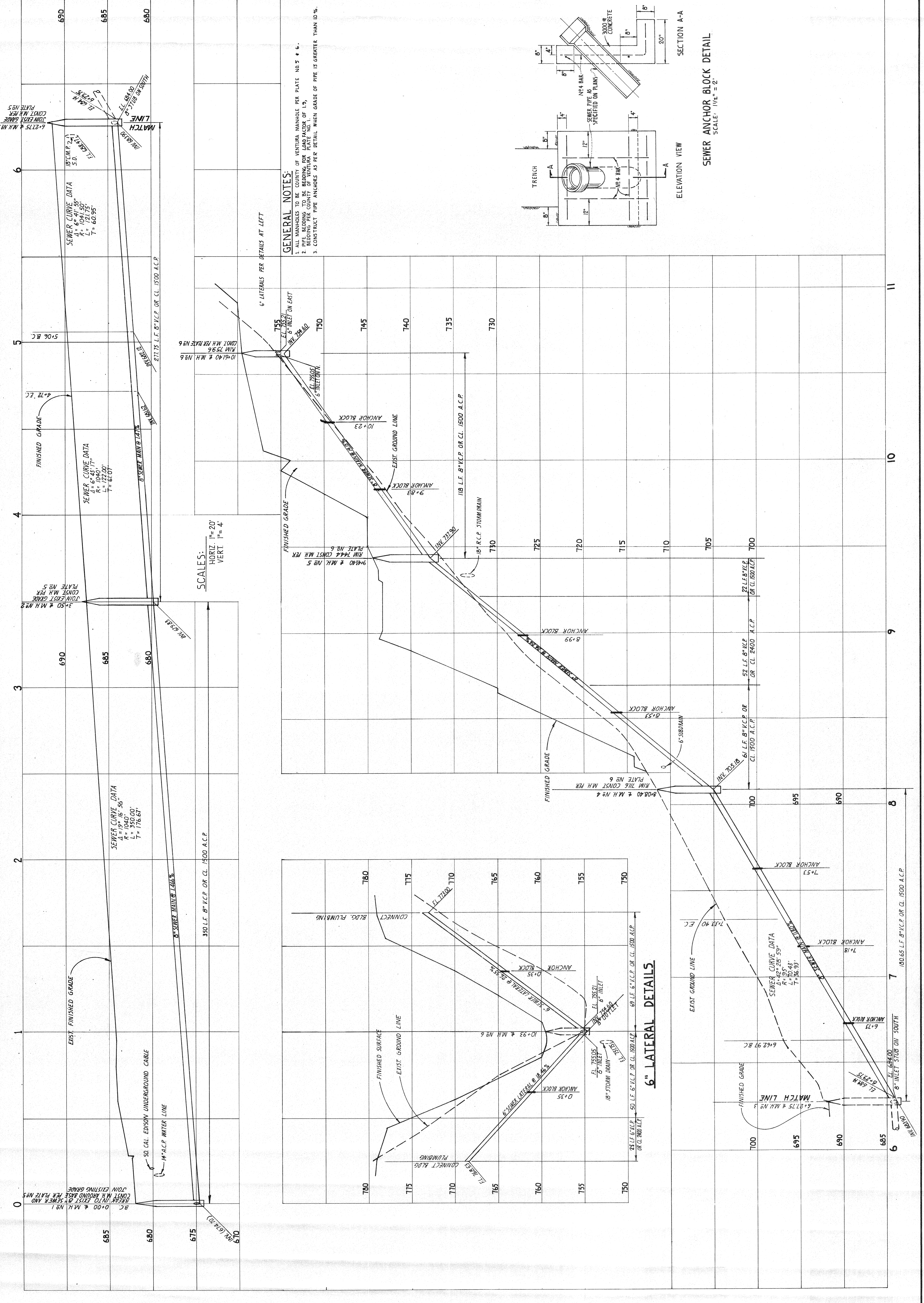
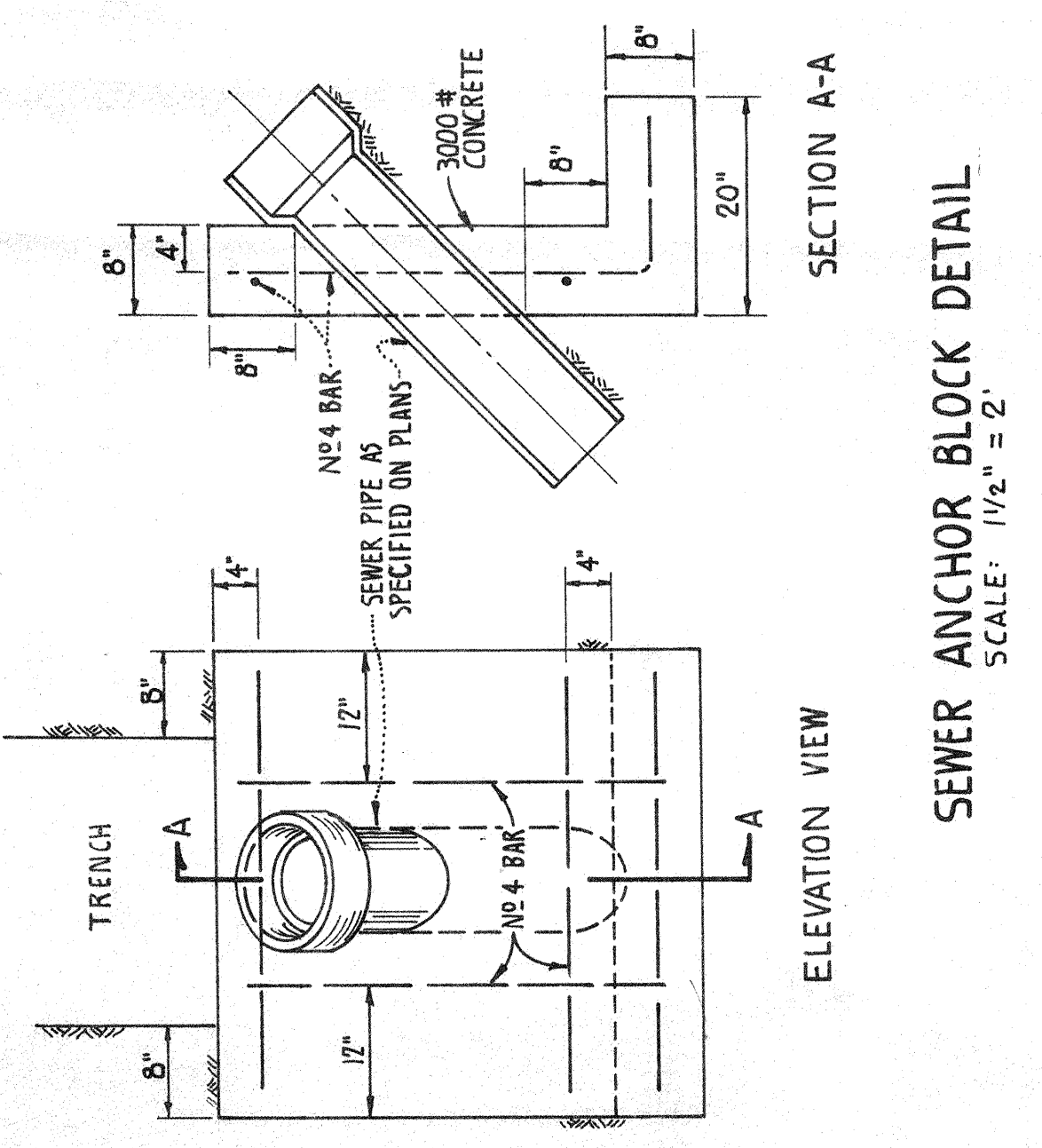


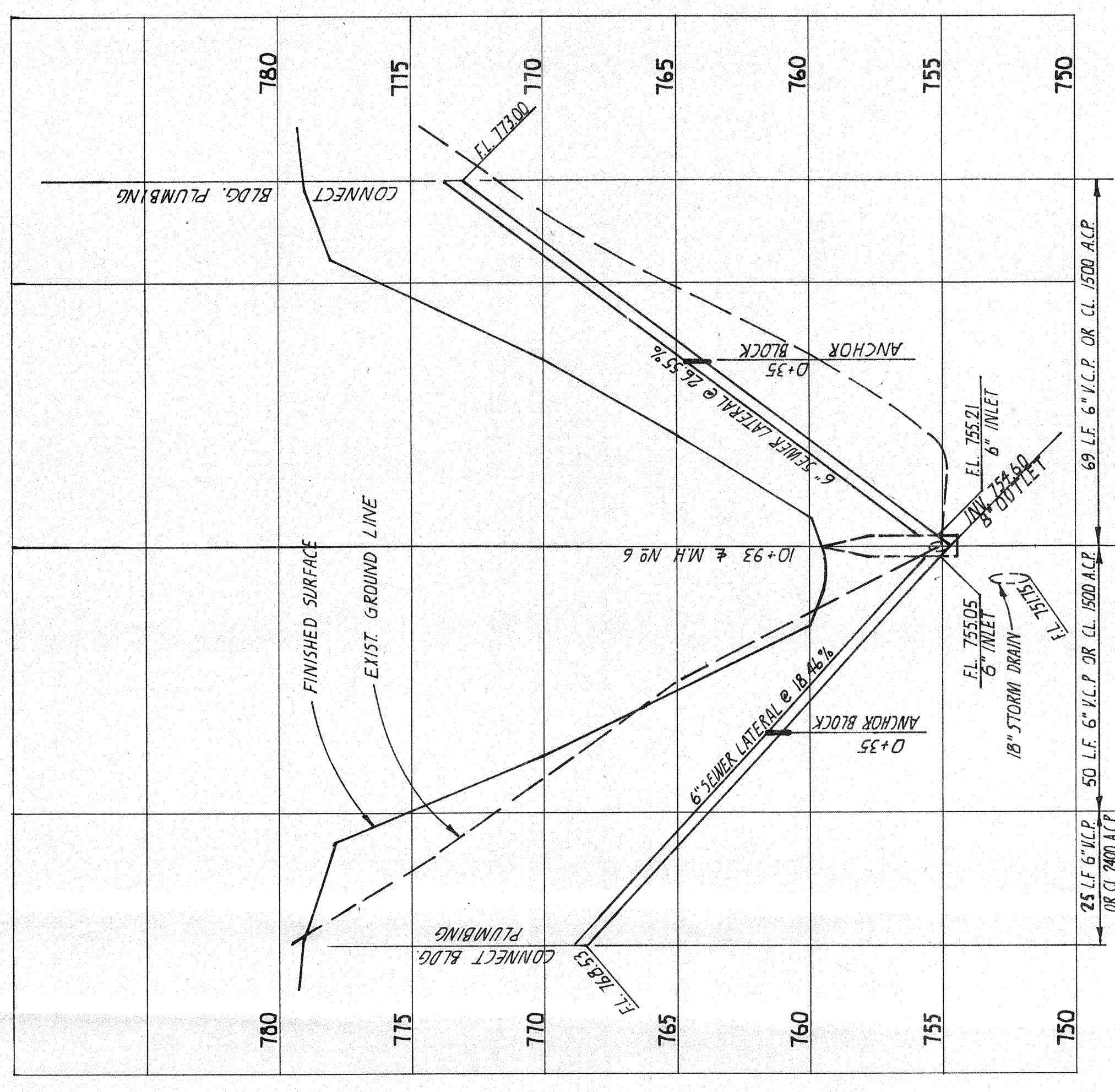
PROFILE
SANITARY SEWER



GENERAL NOTES:
 1. ALL MANHOLES TO BE COUNTY OF VENTURA MANHOLE PER PLATE NO. 5 * 6.
 2. REPAIRS TO EXISTING MANHOLES TO BE MADE IN ACCORDANCE WITH THE COUNTY OF VENTURA PLATE NO. 5.
 3. CONSTRUCT PIPE ANCHORS AS PER DETAIL WHEN GRADE OF PIPE IS GREATER THAN 10%.



6\"/>



SCALES:
 HORIZ. 1" = 20'
 VERT. 1" = 4'