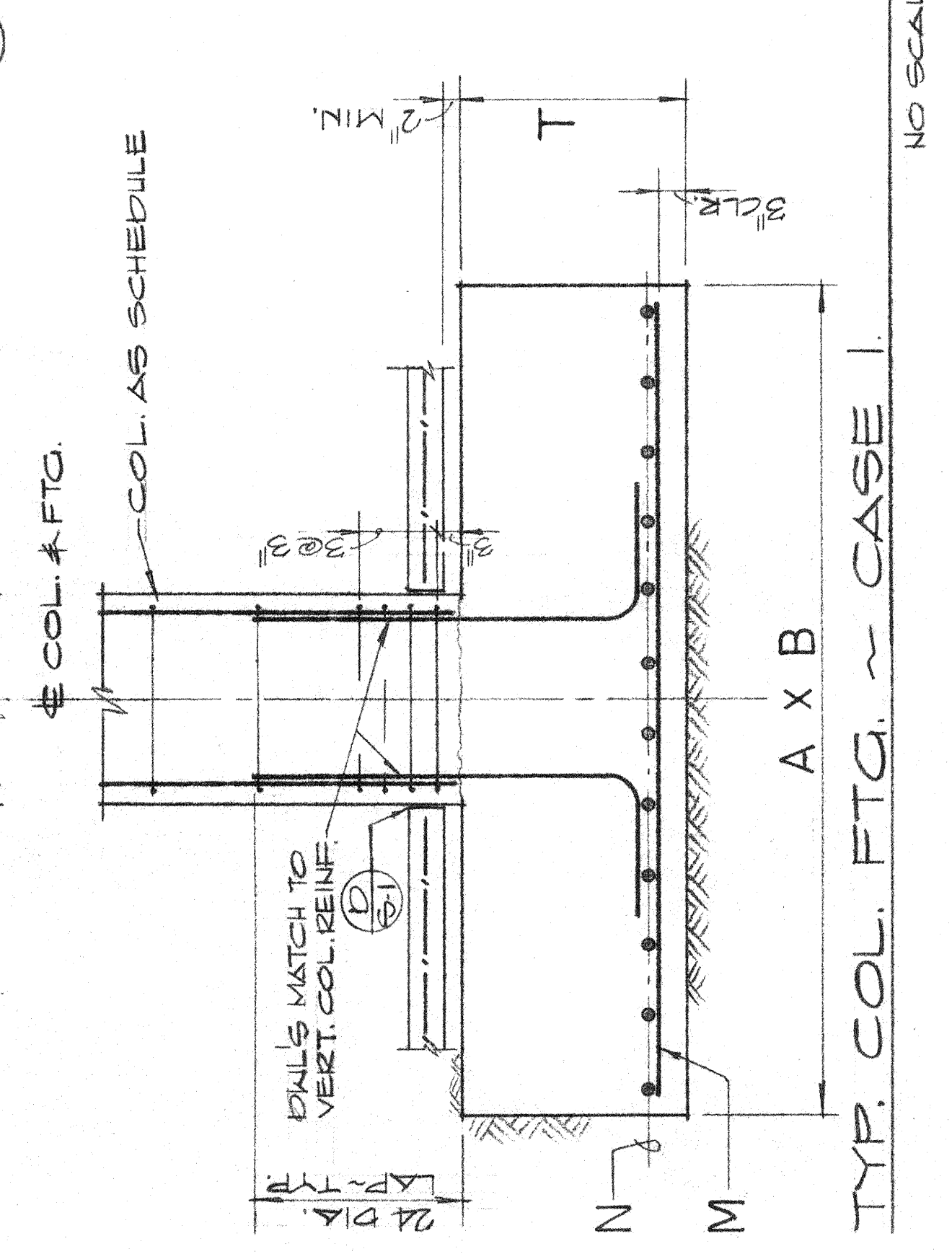
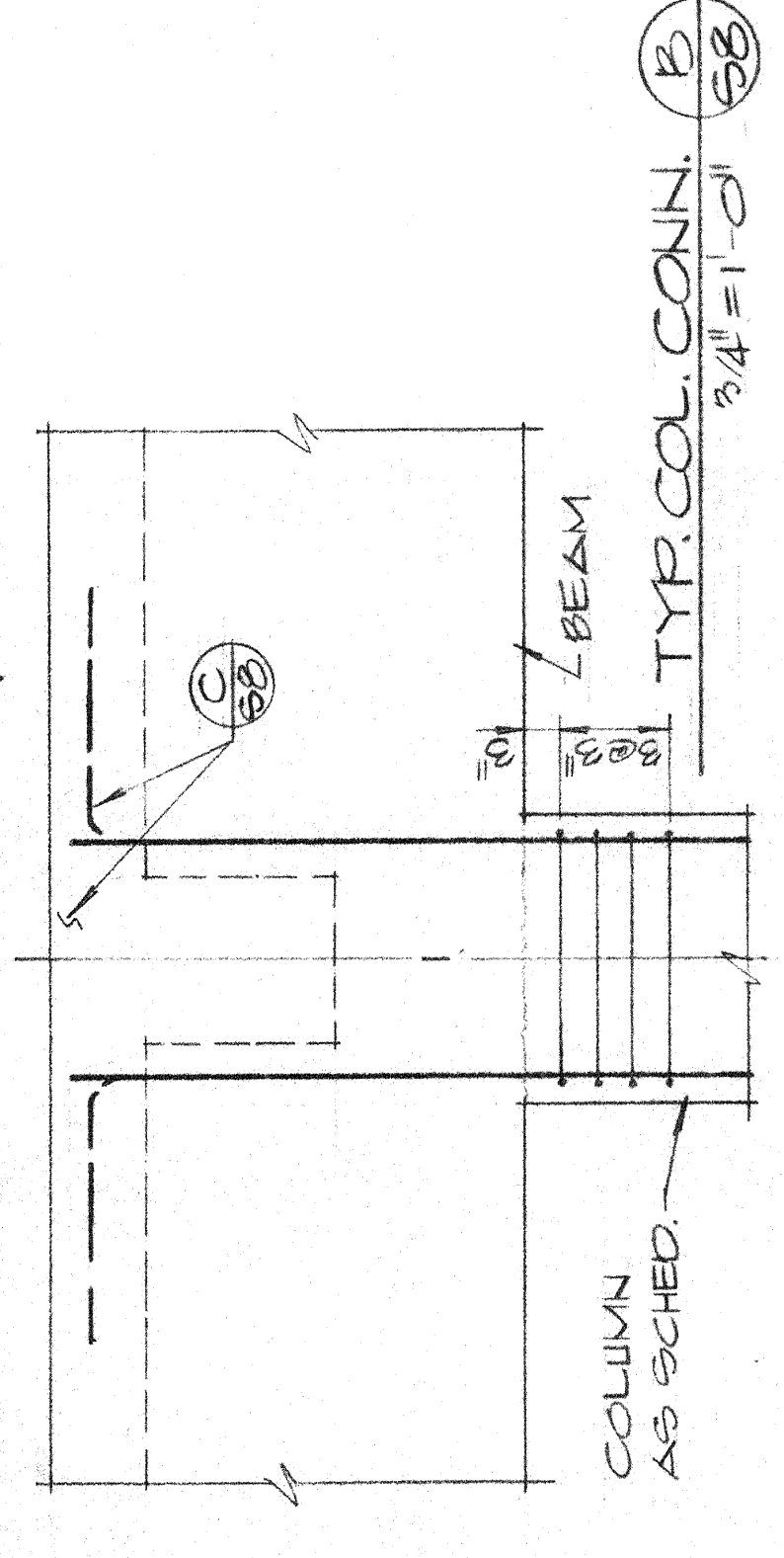


COLUMN SCHEDULE		C-1	C-2	C-3	C-4	C-5	C-6	C-7	C-8
MARK		(B)/(3)(4)(14)(16) (E)/(23)(24)	(D)/(3)(6)(7)(8) (E)/(10)(11)(7)(10)(22) (C)/(6)(7)(8)(11) (C)/(18)(19)(22)(23)(25) (E)/(13)(15) (F)/(23)(24)	(C)/(14) (F)/(15)(16)	(B)/(25) (C)/(3)(12)(20)(21)(24) (E)/(2)(3)(4)(23)(24)	(B)/(1)(2) (C)/(1)(2)(5)(12)(16)	(C)/(17)	(B)/(9)	(C)/(9)
LOCATION									
SECTION									
SIZE		24" DIA.	24" DIA.	24" DIA.	24" x 24"	24" x 24"			
VERT. REINF.		12-#11	12-#10	8-#11	12-#9	8-#8	12-#10 #3-#7	4-#10 EA.	SEE SECT.
TIES OR SPIRAL		3/8" COLD DRAWN SPIRAL @ 3"	3/8" COLD DRAWN SPIRAL @ 3"	3/8" COLD DRAWN SPIRAL @ 3"	#3 TIES @ 12"	#3 TIES @ 12"	#3 TIES @ 12" & 24" DOWN SPIRAL @ 3"	#3 TIES @ 12"	#3 TIES @ 12"
REMARK		SEE (C)/(E) (23)(28)	SEE (C)/(E) (23)(28)	SEE (F)/(23)(28)	SEE (B)/(D) (23)(28)	SEE (B)/(D) (23)(28)	SEE (C)/(E) (23)(28)	SEE (B)/(D) (23)(28)	SEE (B)/(D) (23)(28)

NOTE - COLD DRAWN SPIRAL SHALL CONFORM TO ASTM A52-66 GRADE 60,000 P.S.F.



COLUMN FOOTING SCHEDULE		F-1	F-2	F-3	F-4
MARK		(B)/(3)(5)(10)(2) (E)/(10)(11)(12)(4) (B)/(16)(17)(22)(3) (C)/(6)(8)(11)(14)(19) (C)/(20)(23)	(B)/(17)(18) (C)/(16)(23) (E)/(23)(24)	(B)/(1)(2) (C)/(1) (F)/(13)(15)(23)(24)	(B)/(20)(21)(25)
LOCATION					
CASE 1		FOOTINGS PLACED IN THE SOIL CEMENT COMPACTED FILL. DESIGN BEARING VALUE OF 6000 P.S.F.			
DIMS		10'-0"	9'-0"	8'-0"	11'-0"
THICK.		10'-0"	9'-0"	8'-0"	8'-0"
REINF.		18-#6	15-#6	12-#6	10-#8 @ LOWER SPAN 10-#6 @ UPPER SPAN
CASE 2		AT LEAST 18" INTO THE UNWEATHERED BEDROCK DESIGN BEARING VALUE OF 10,000 P.S.F.			
DIMS		5'-9"	5'-0"	4'-3"	5'-9"
THICK.		5'-9"	5'-0"	4'-3"	5'-9"
REINF.		10-#6	8-#6	6-#6	10-#6 10-#6
REMARK		SEE (B)/(C) (23)(28)	SEE (B)/(C) (23)(28)	SEE (B)/(C) (23)(28)	SEE (B)/(C) (23)(28)

