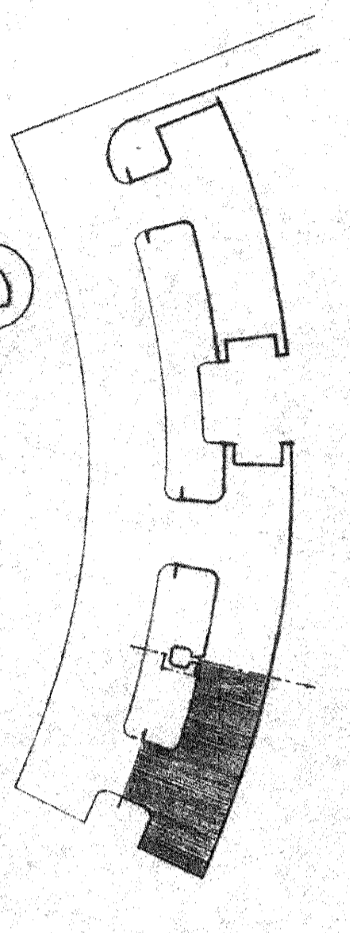
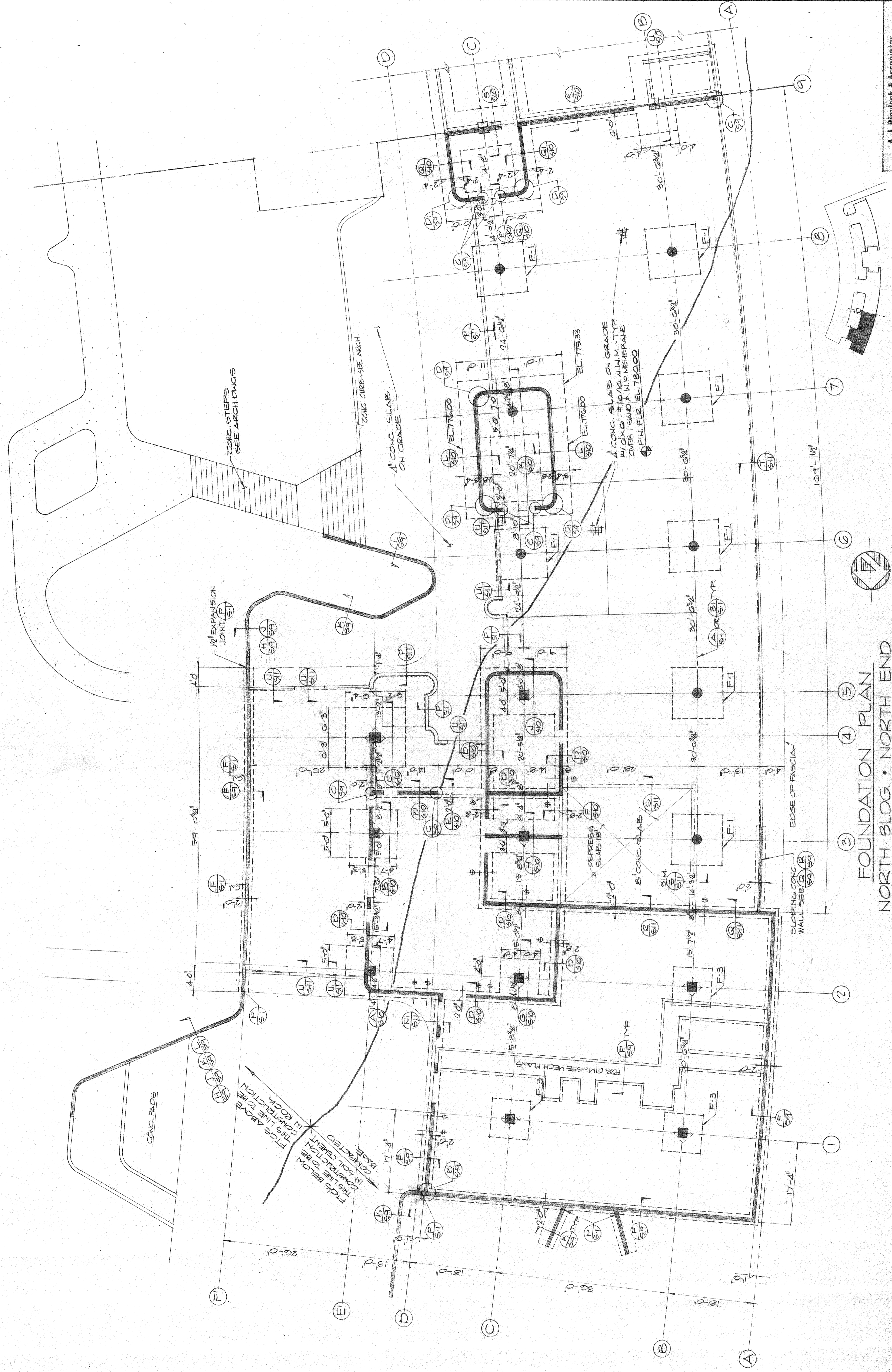
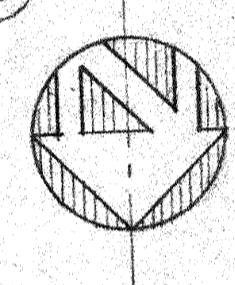


A. J. Blaylock & Associates
 ARCHITECTS
 10000 WILSON AVENUE
 VAN NUYS, CALIFORNIA 91411
 TEL: 707/461-1111

- NOTES:
1. FOR COLUMNS AND COLUMN FOOTINGS, SEE SCHEDULE SHEET S-8
 2. FOR STAIR DETAILS, SEE SHEET S-18
 3. FOR R.C. WALLS & FOUNDATIONS, SEE SHEETS S-9, S-10 & S-11
 4. FOR R.C. RETAINING WALLS, SEE SHEET S-9
 5. FOR EXT. SLAB & CONC. WALK, SEE ARCH. PLANS
 6. FOR MACHINERY BASES, SIZE & LOCATION, SEE MECH. DWGS.



KEY PLAN



FOUNDATION PLAN
 NORTH BLDG - NORTH END

SCALE: 1/8"=1'-0"