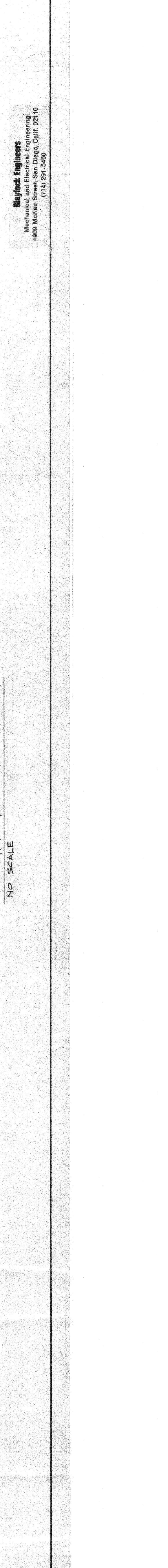
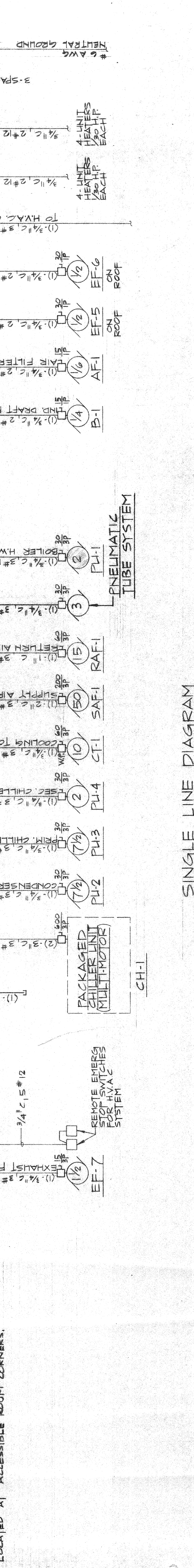
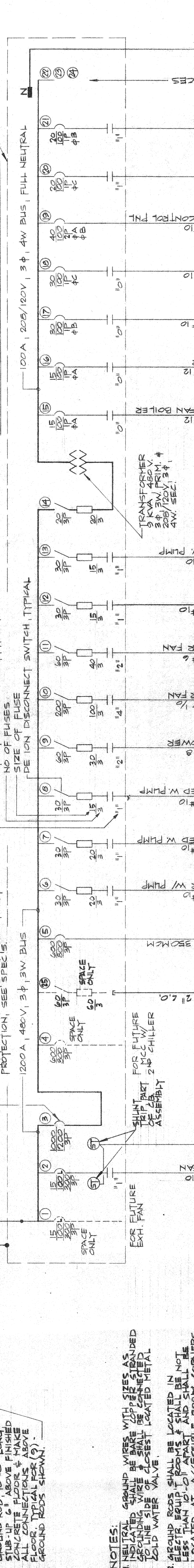
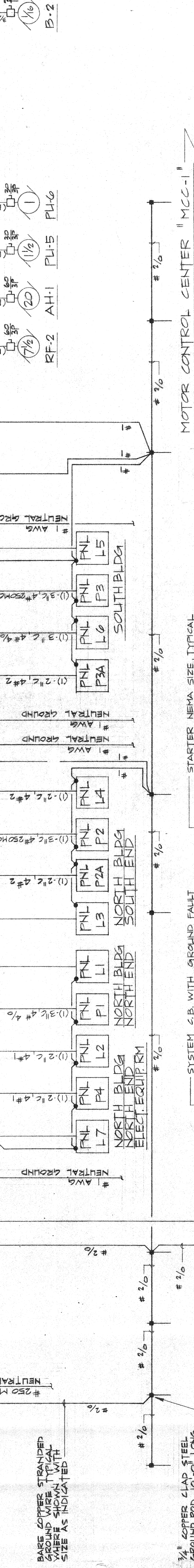
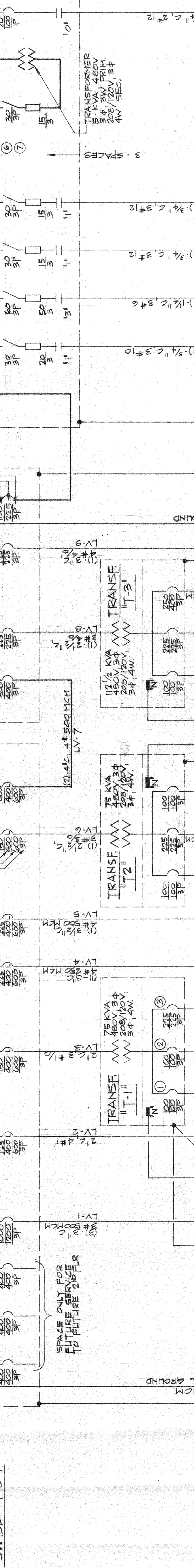
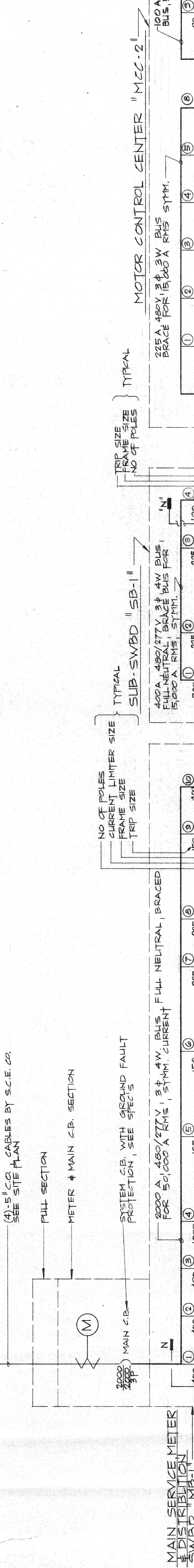


NOTES:
 1. ALL FUSES SHOWN IN MOTOR CONTROL CENTERS SHALL BE PULL ELEMENT TYPE. VERIFY FUSE SIZES WITH NAMEPLATE FUSE SIZES ON ALL MOTOR CONTROLS & PROVIDE CORRECT SIZES WHERE REQUIRED.
 2. MOTOR BRANCH CKT COND. & WIRE SIZE FROM DISC. SW. TO MOTOR SHALL BE THE SAME AS SIZES SHOWN FROM MCC TO DISC. SW.



NOTES:
 1. NEUTRAL GROUND WIRE SHALL BE MADE OF COPPER OR ALUMINUM. WIRE SHALL BE LOCATED TO THE LINE SIDE OF CLOSEST LOCATED METAL JOINT WATER VALVE.
 2. GROUND RODS SHALL BE LOCATED IN ELECTRICAL EQUIPMENT ROOMS & SHALL BE NOT LESS THAN 10'-0" APART AND SHALL BE LOCATED AT ACCESSIBLE ROOF CORNERS.

SINGLE LINE DIAGRAM
 NO SCALE

Baybeck Engineers
 Mechanical and Electrical Engineering
 1800 McKee Street, San Diego, Calif. 92110
 (714) 531-5460