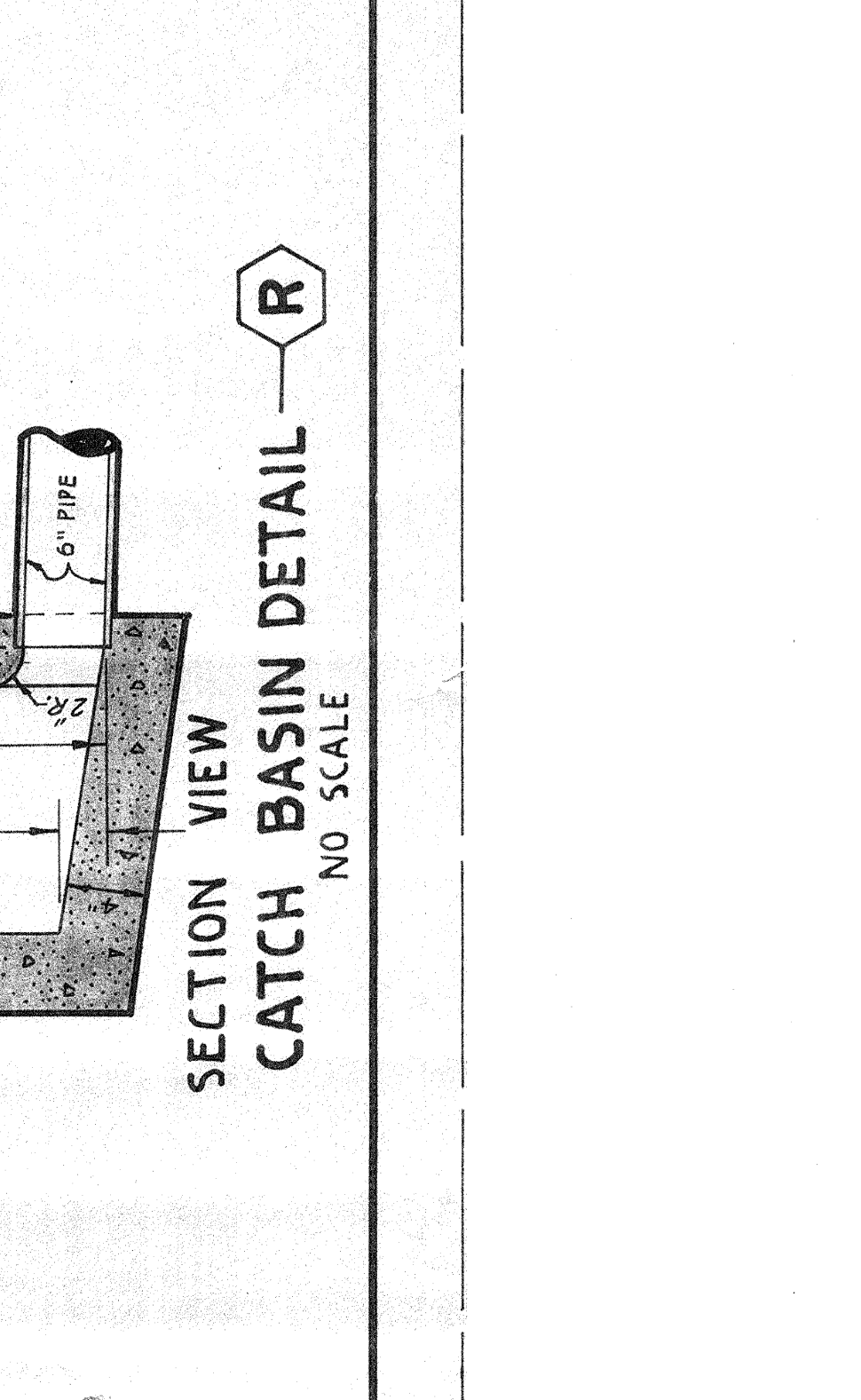
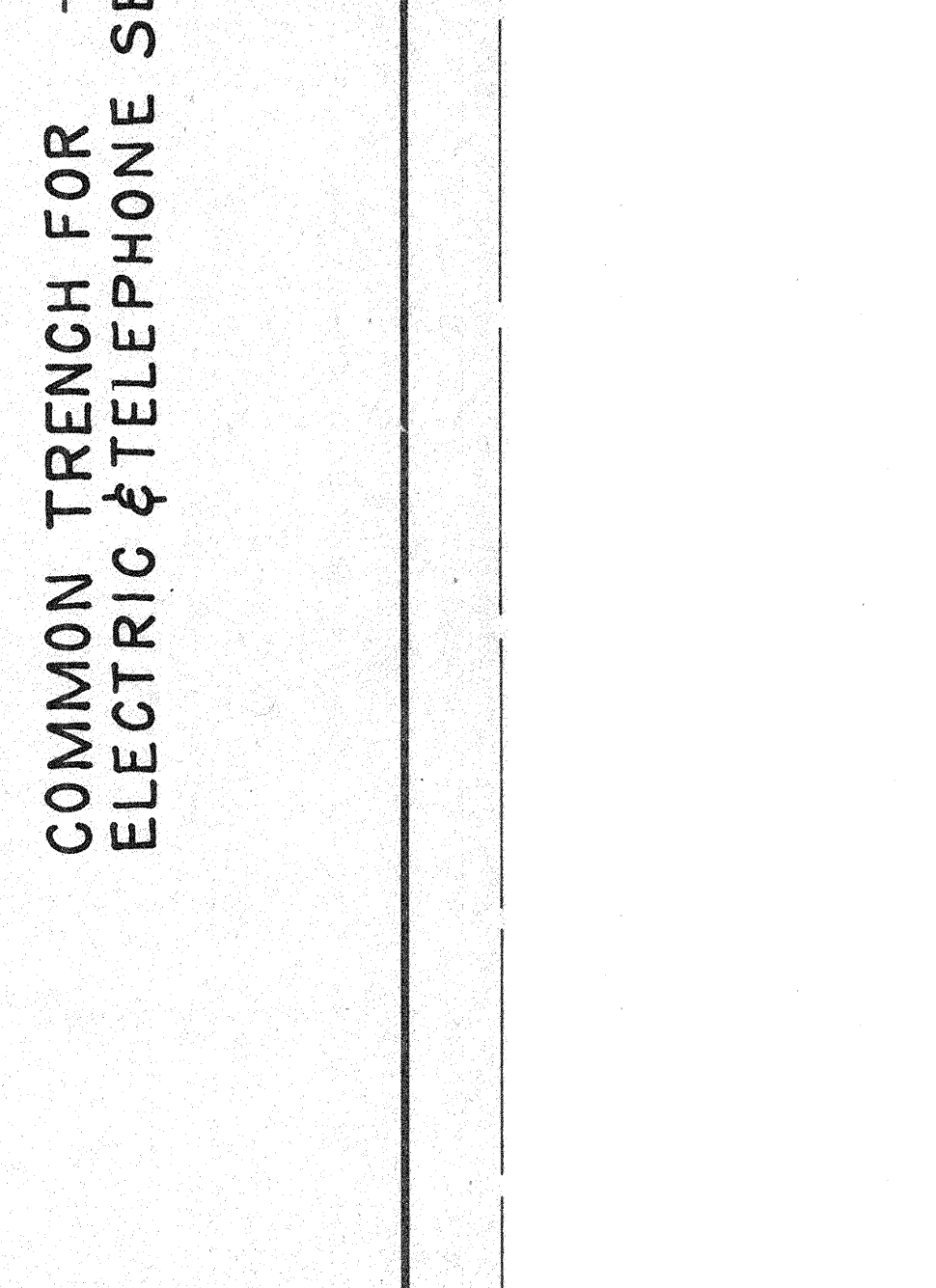
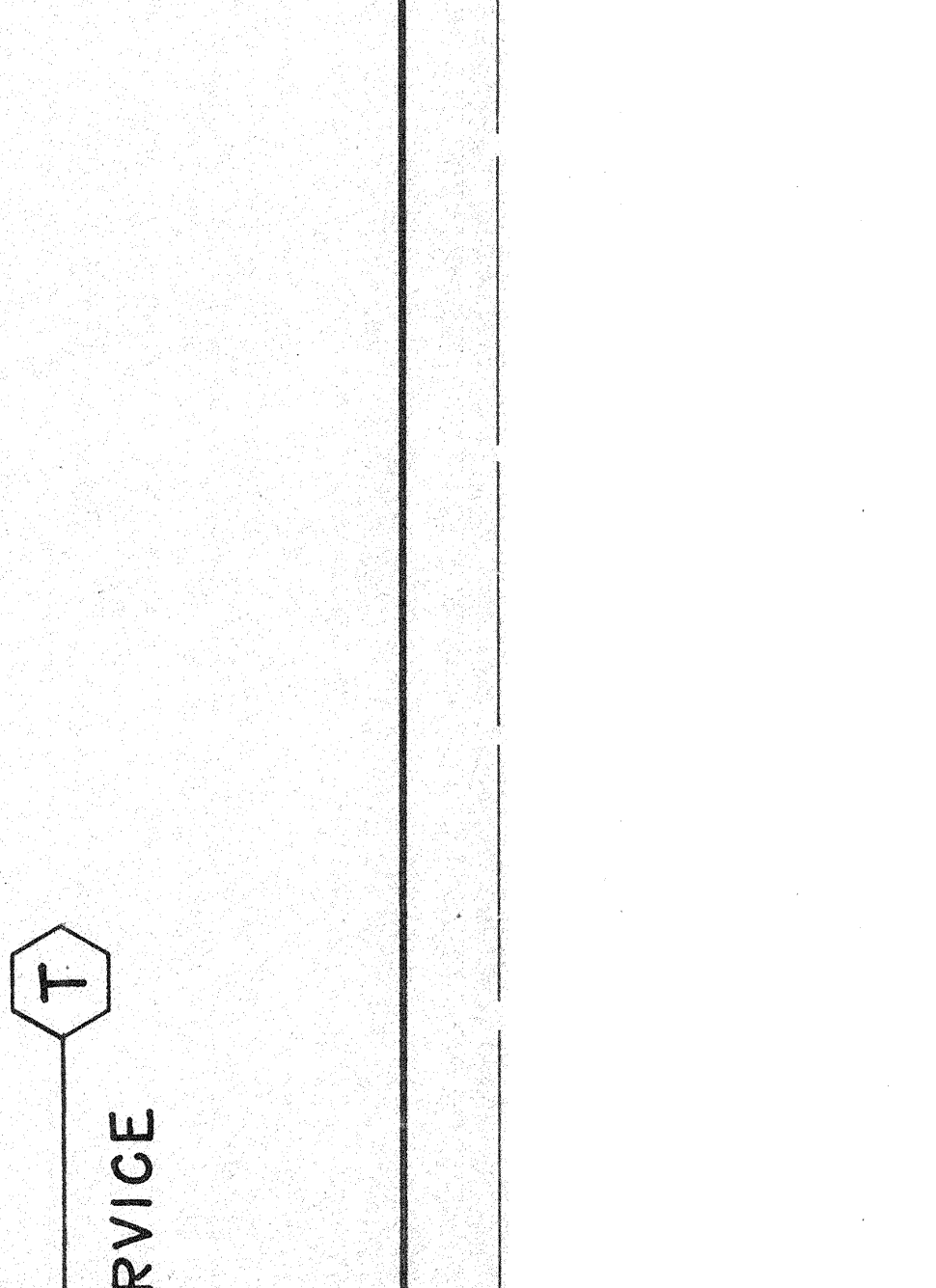
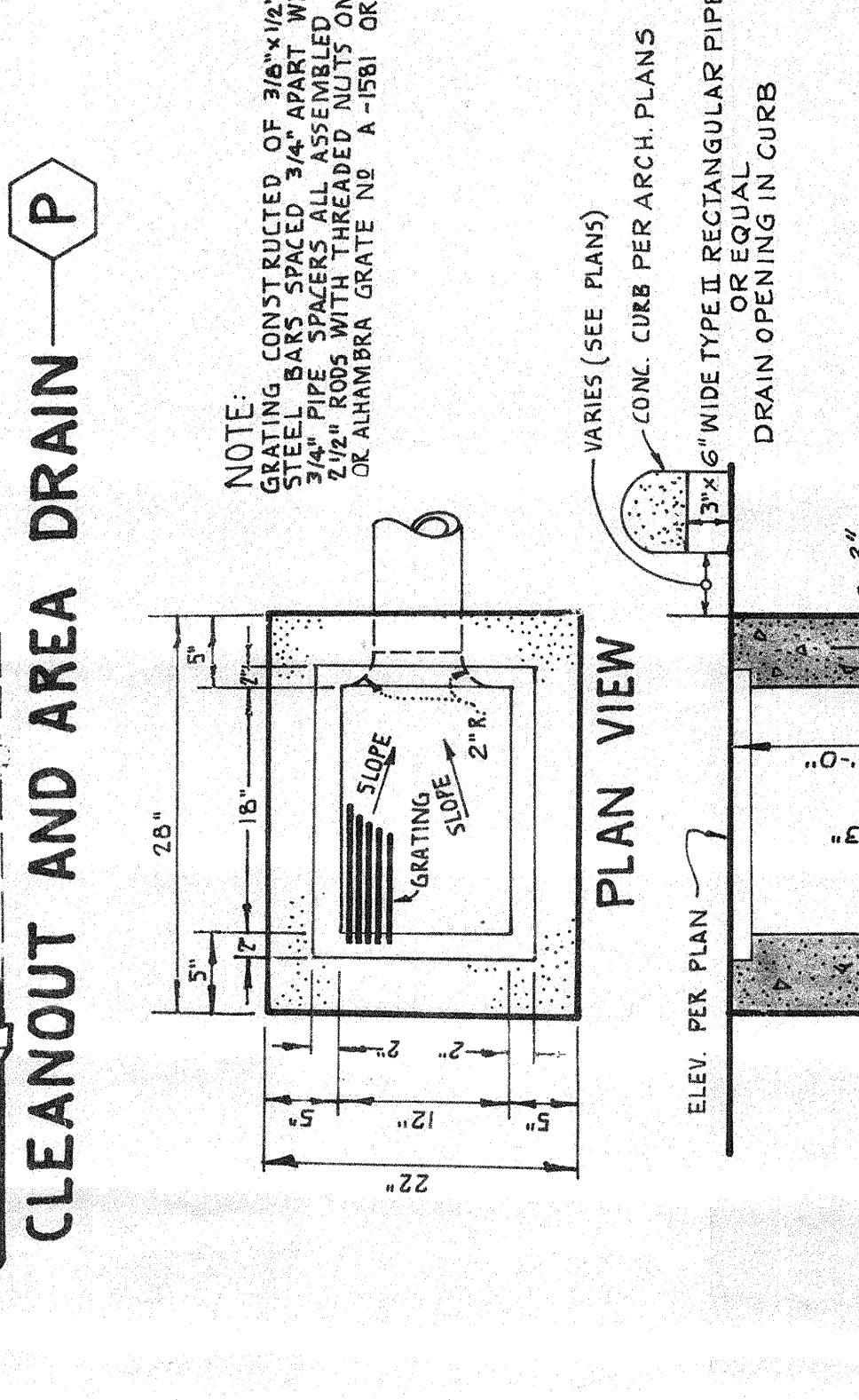
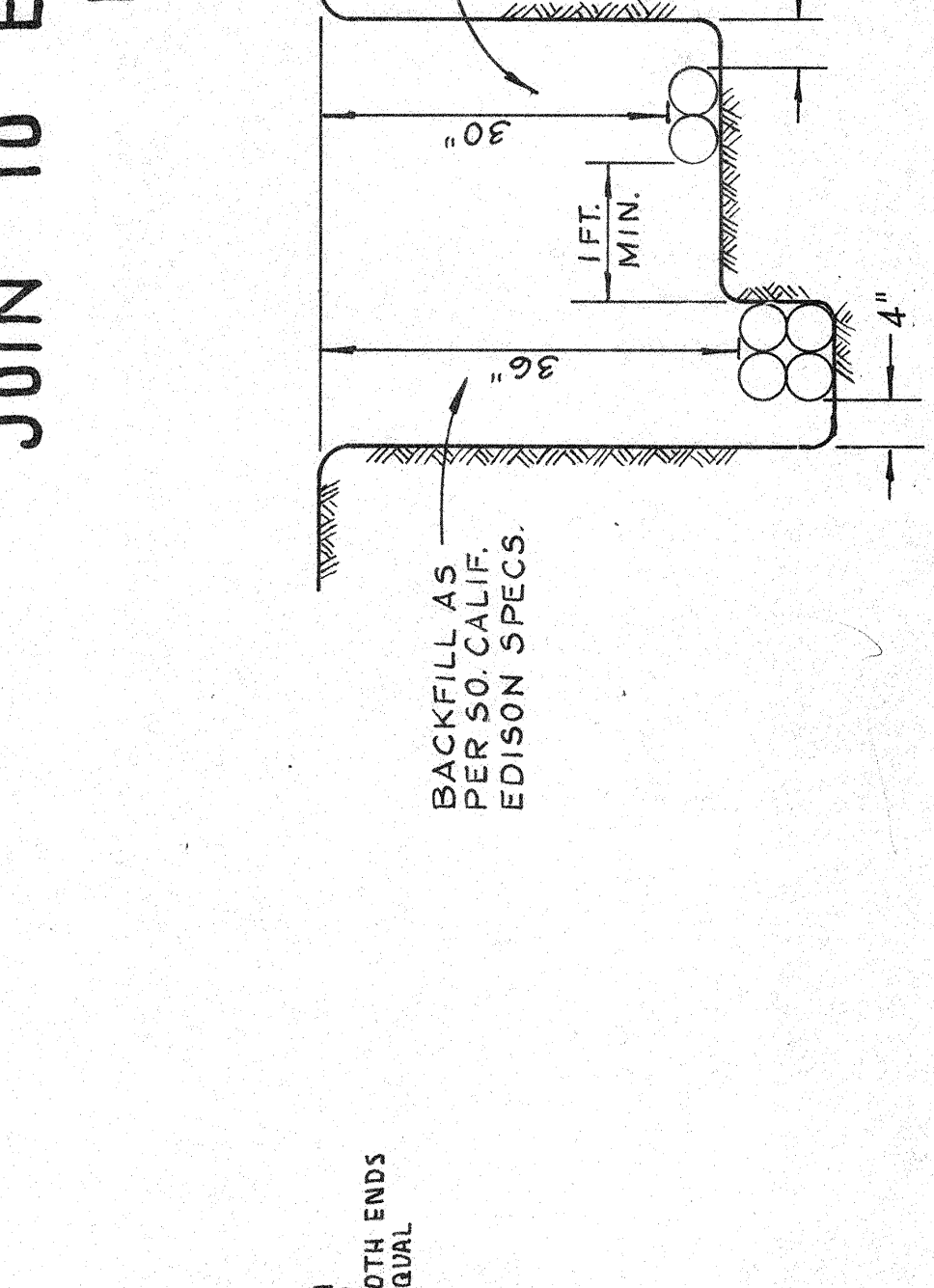
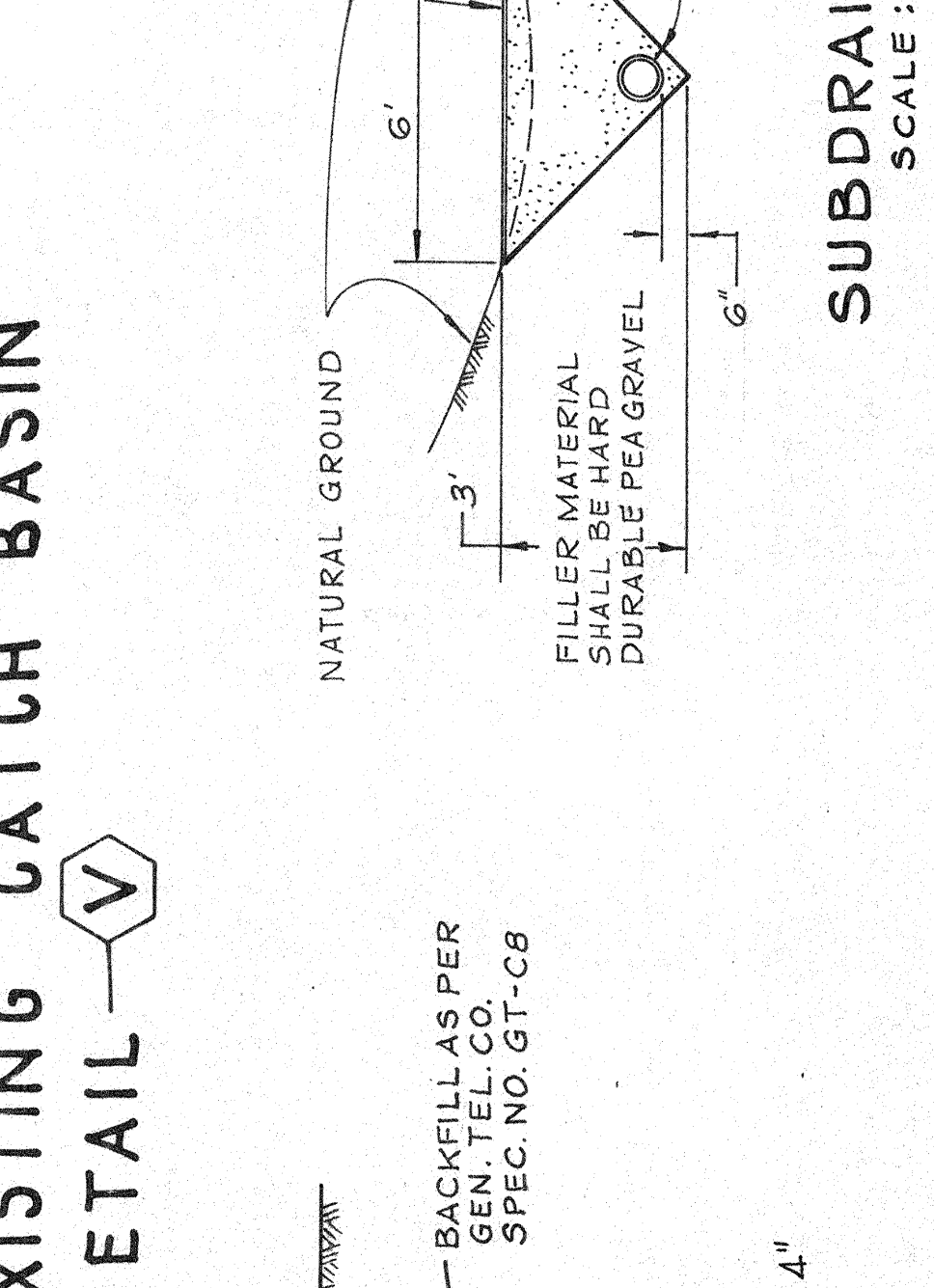
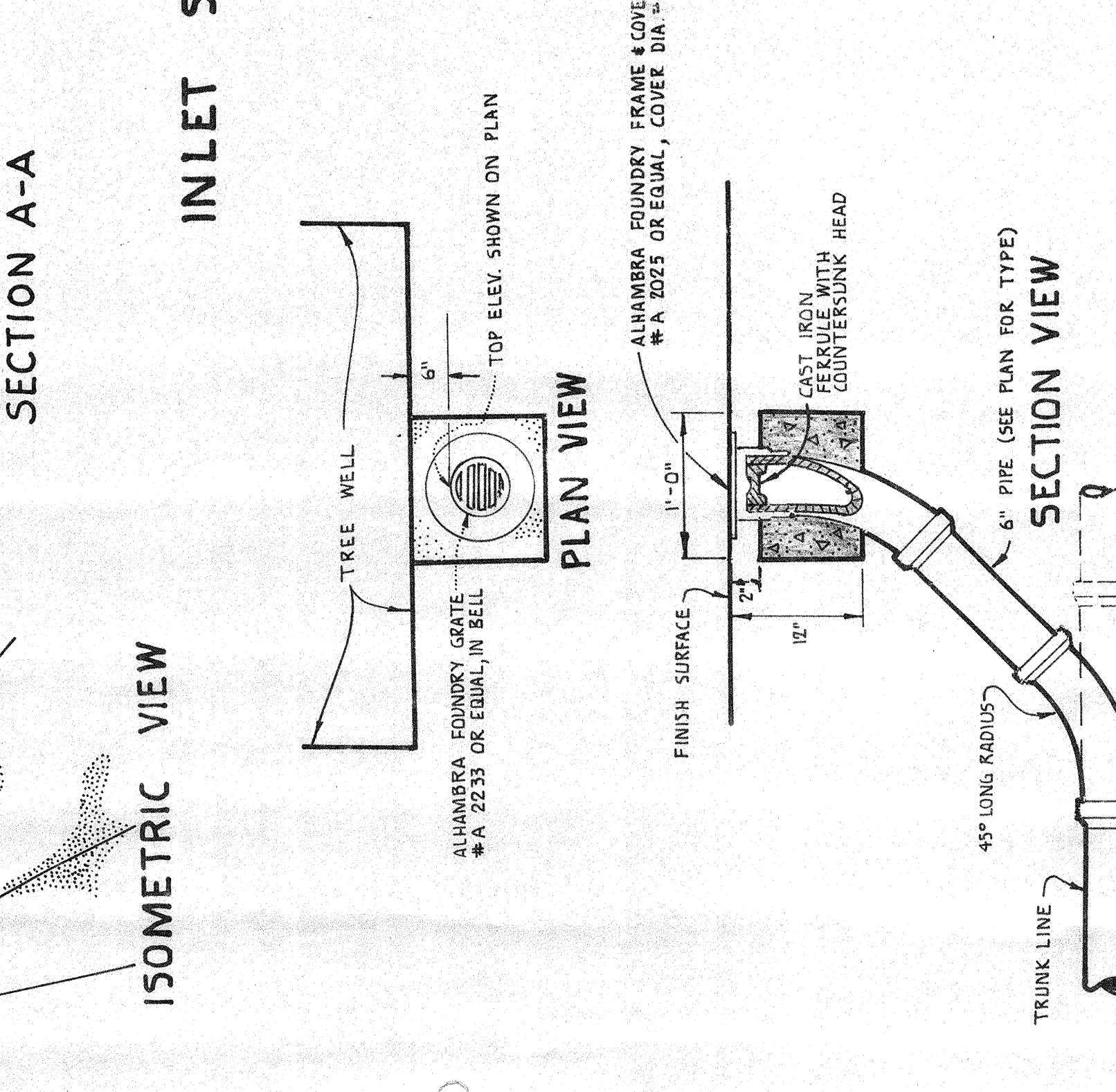
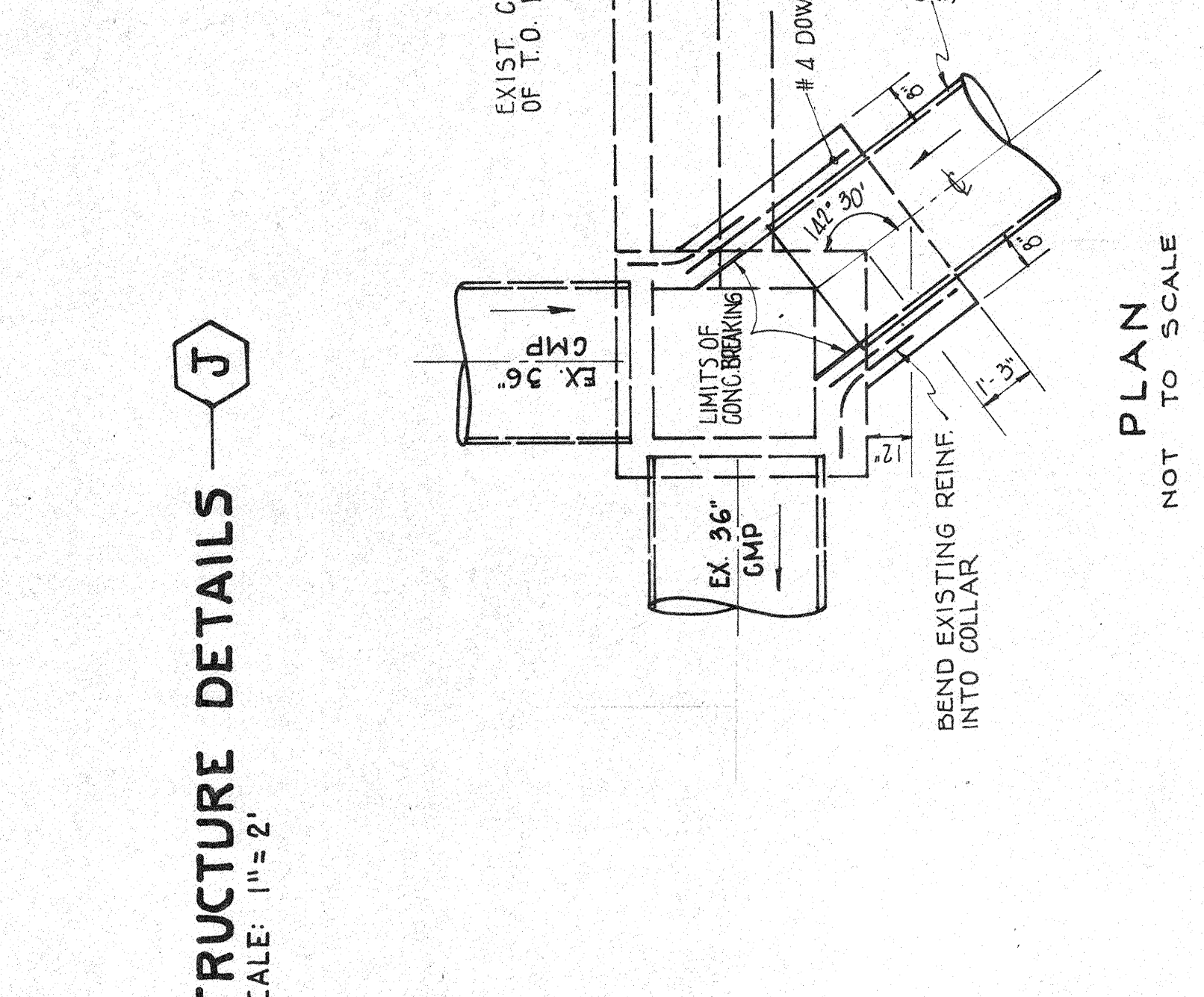
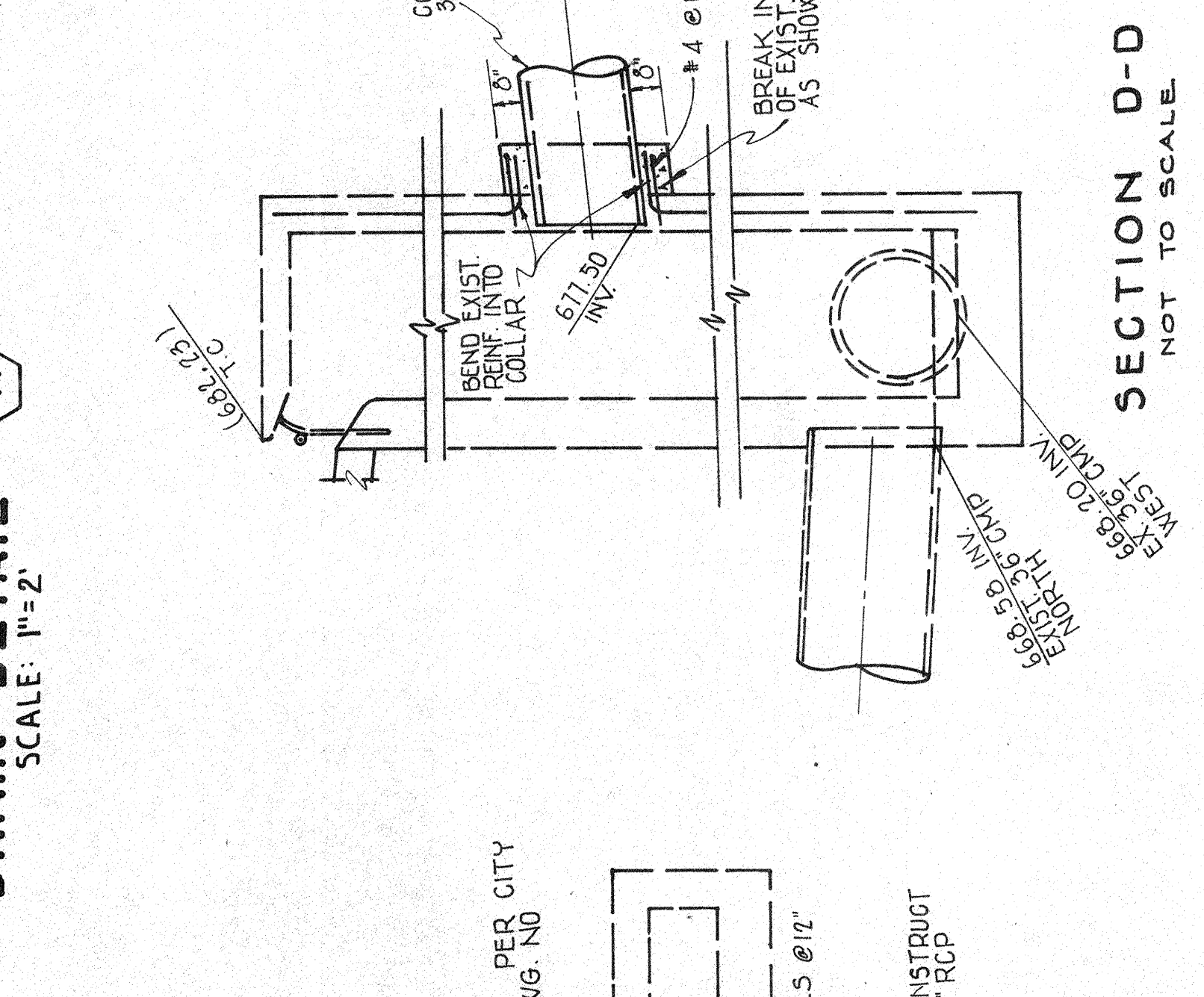
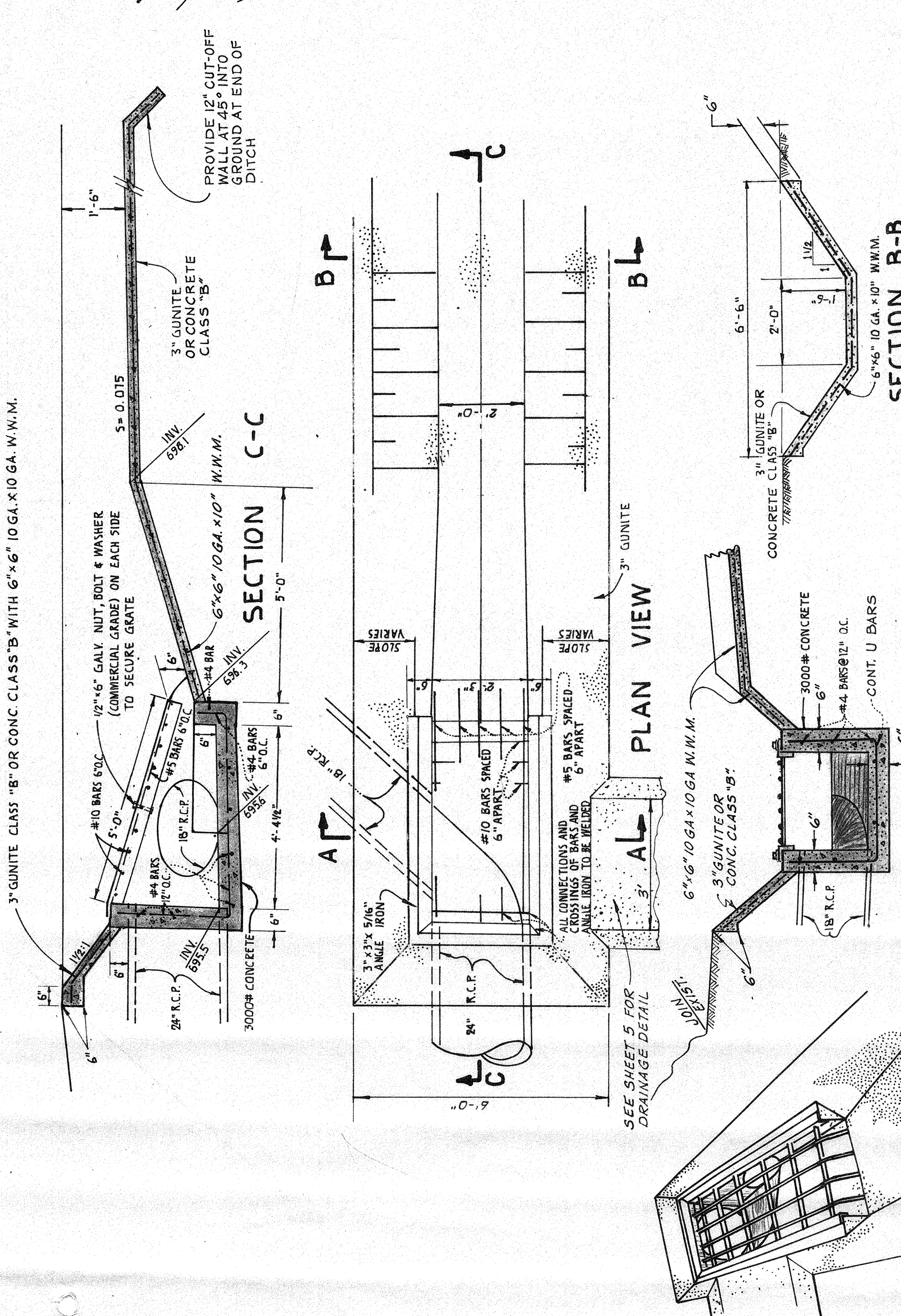
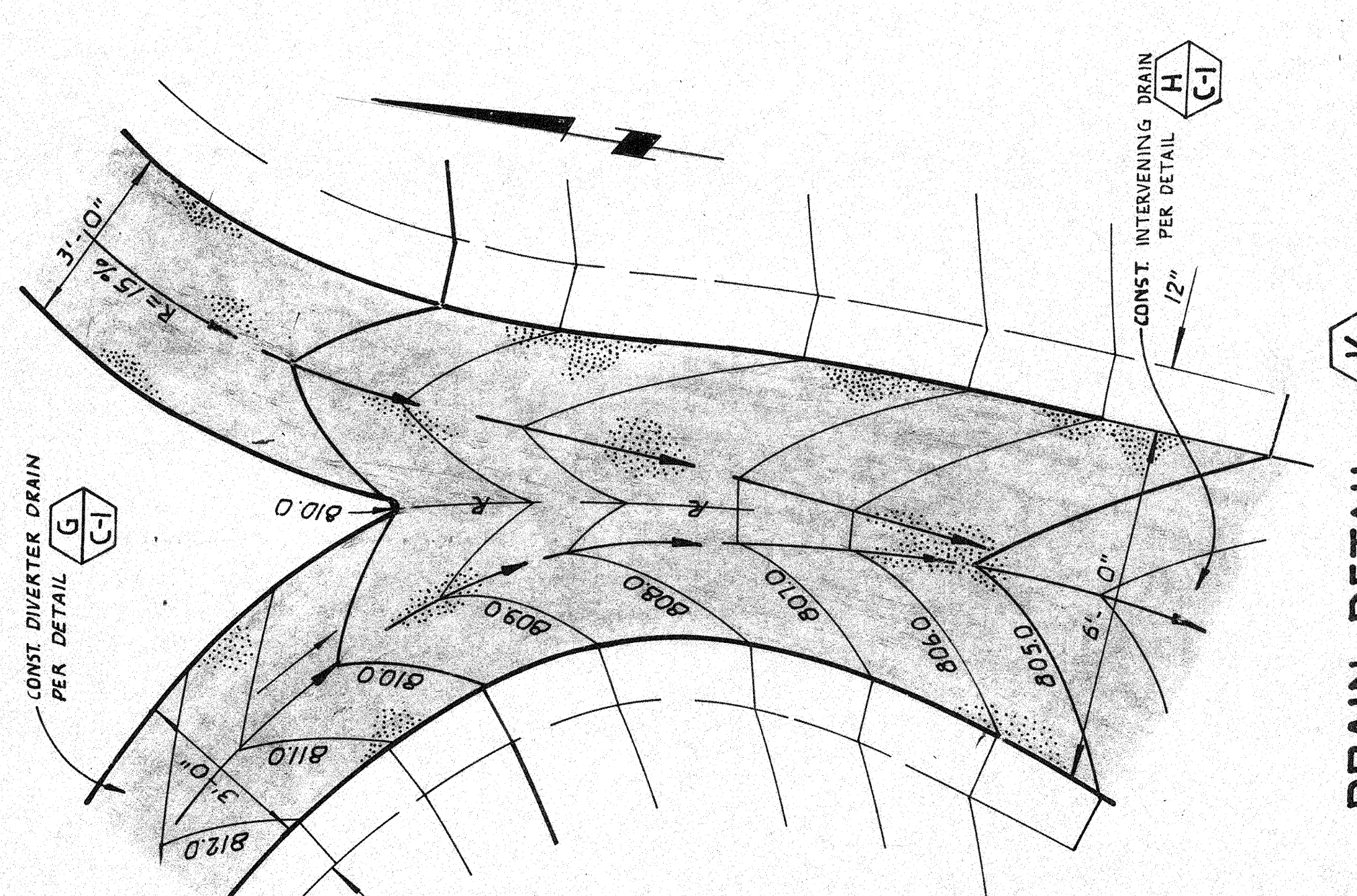
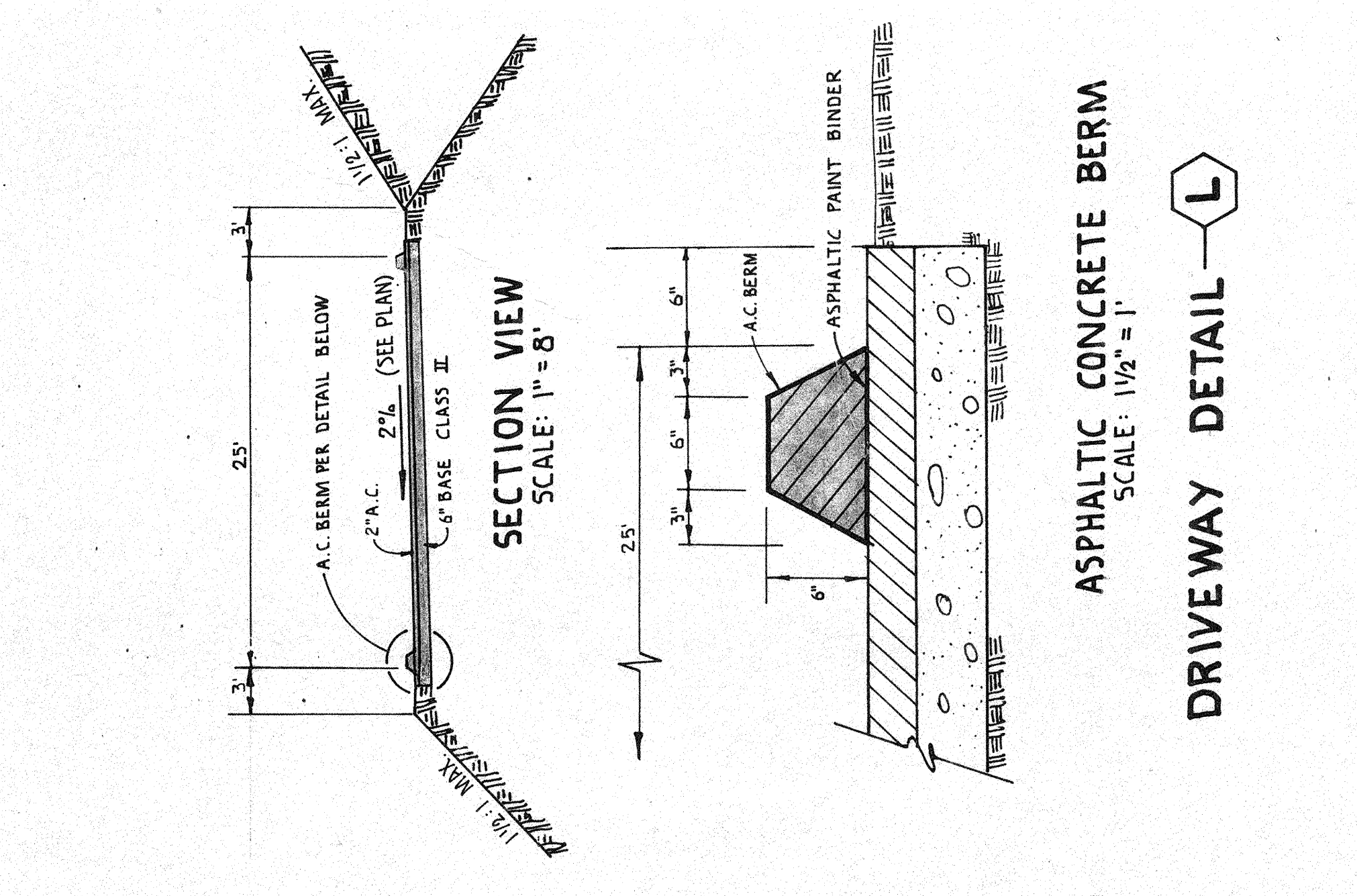
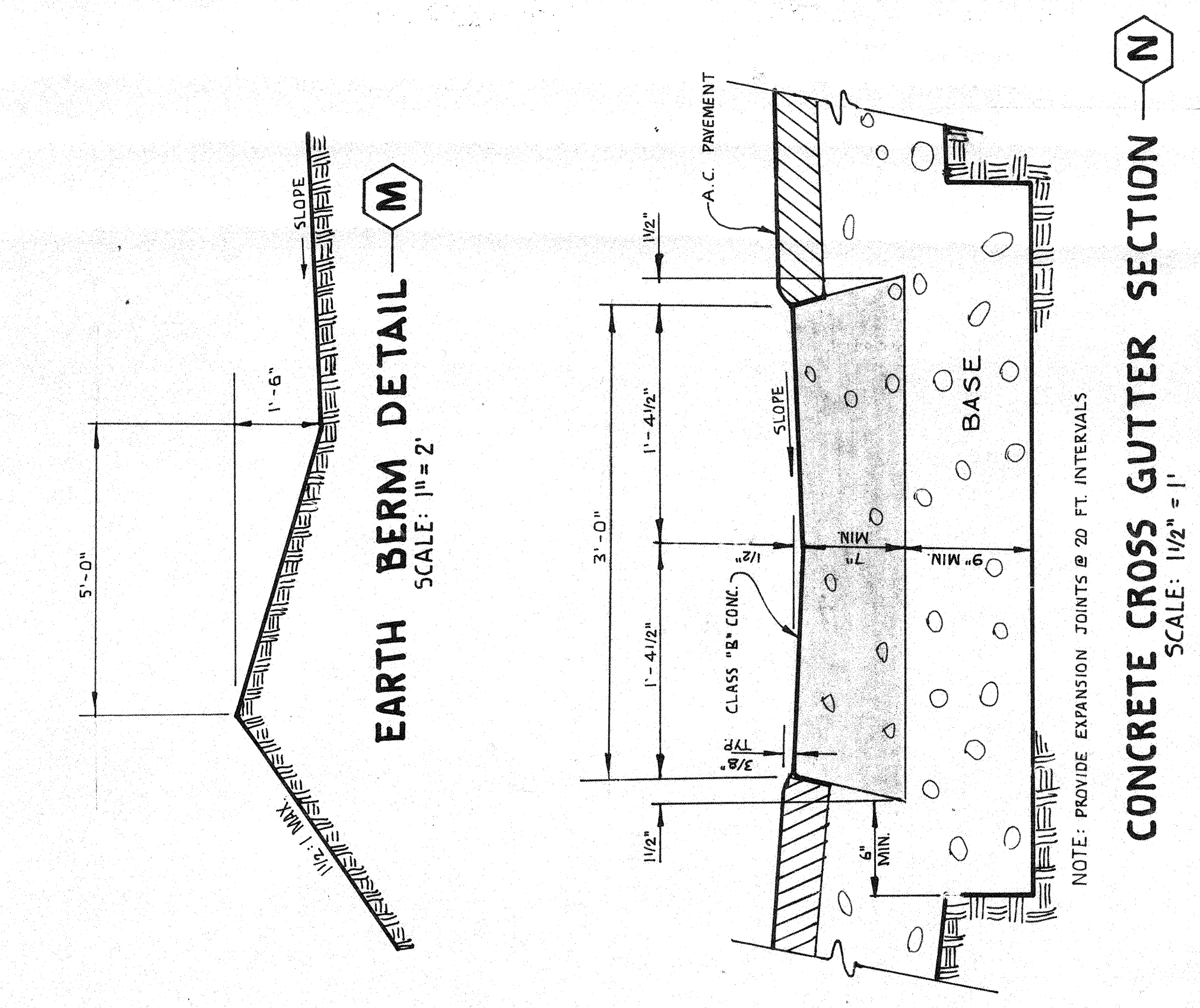


DETAIL SHEET

CITY OF THOUSAND OAKS DRAWING NO. 71-61A



NOTE:  
 GRATING CONSTRUCTED OF 3/8" x 1/2" x 3/4" SPACERS ED. 3/4" PART WITH 2 1/2" x 2 1/2" ROSS WITH THREADED NUTS ON BOTH ENDS OR ALUMINUM GRATE NO. A-1581 OR EQUAL

NOTE:  
 VARIES (SEE PLANS)  
 (CONC. CURB PER ARCH. PLANS)  
 3" x 6" WIDE TYPE II RECTANGULAR PIPE OR EQUAL  
 DRAIN OPENING IN CURB

BACKFILL AS PER SPEC. NO. GT-CB

BACKFILL AS PER SPEC. NO. GT-C8

FILLER MATERIAL SHALL BE HARD DURABLE FEAGRAVEL

9.50 FT. PEAGRAVEL LAYED WITH PERFORATIONS DOWN.

LAYER OF TAR PAPER OR VISQUEEN

BREAK INTO BACK WALL OF EXIST. S.D. AND JOIN AS SHOWN

CONSTRUCT 30" RCP

EXIST. C.B. PER CITY OF T.O. DWG. NO.

CONSTRUCT 30" RCP

CONSTRUCT 30" RCP

CONSTRUCT 30" RCP