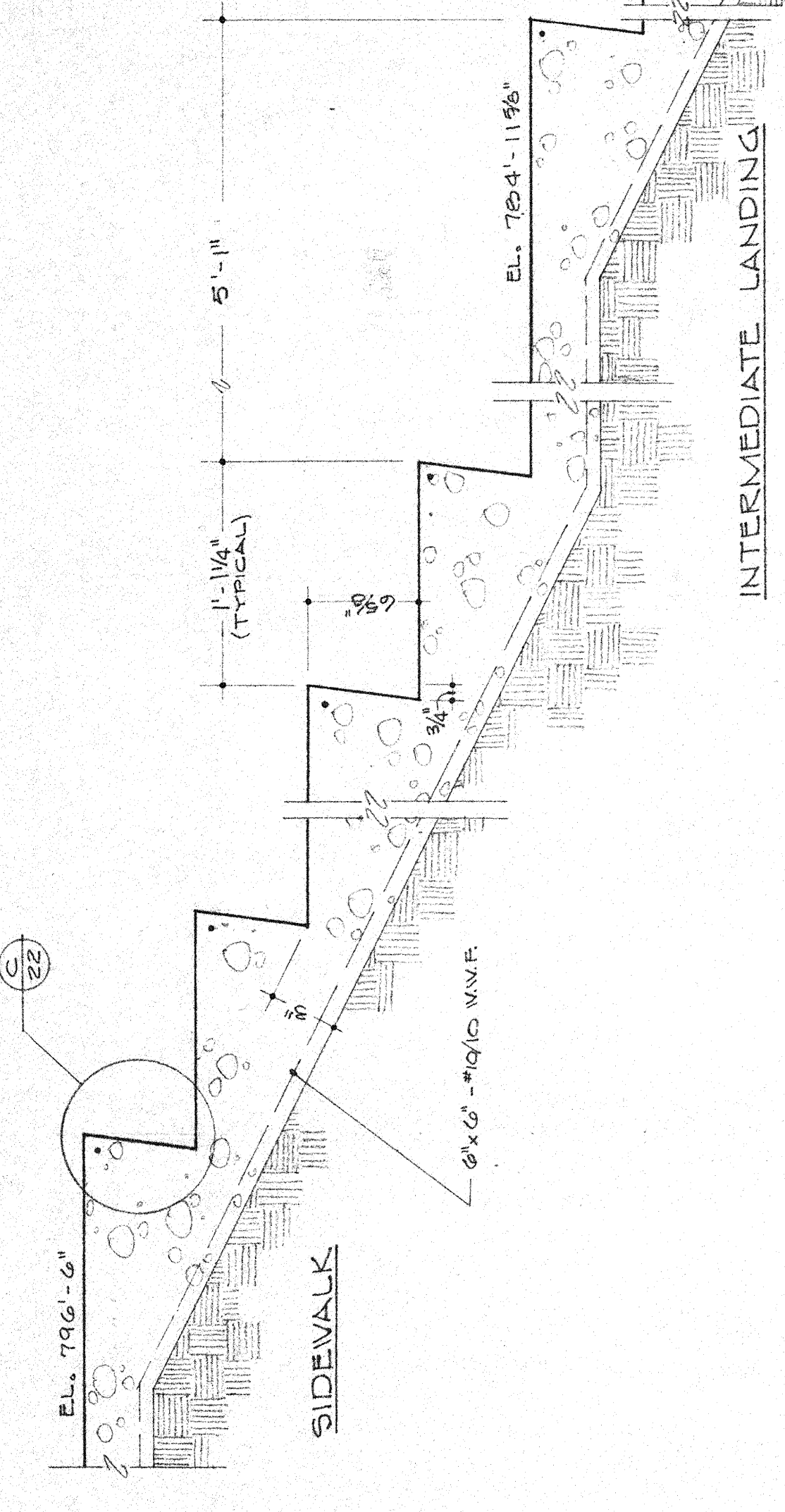
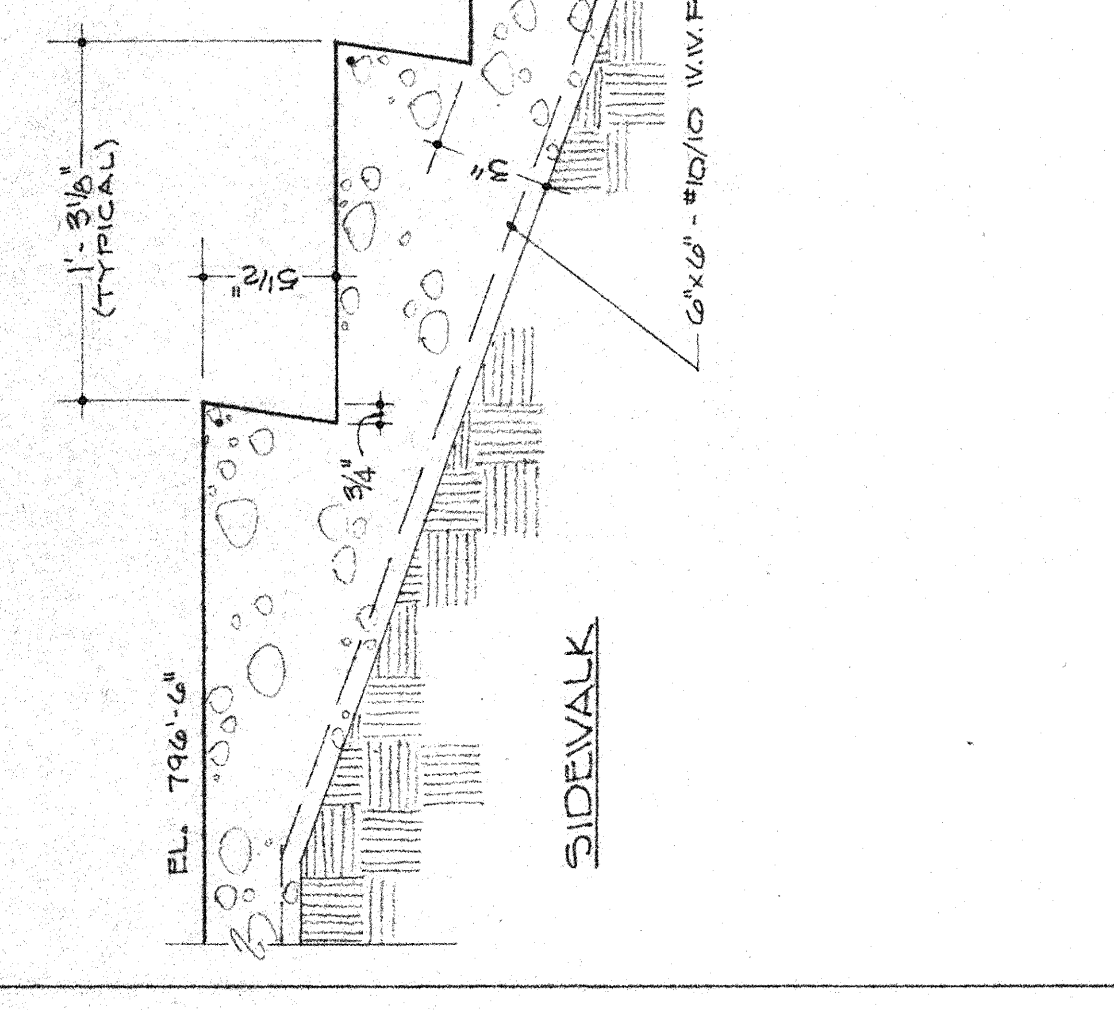


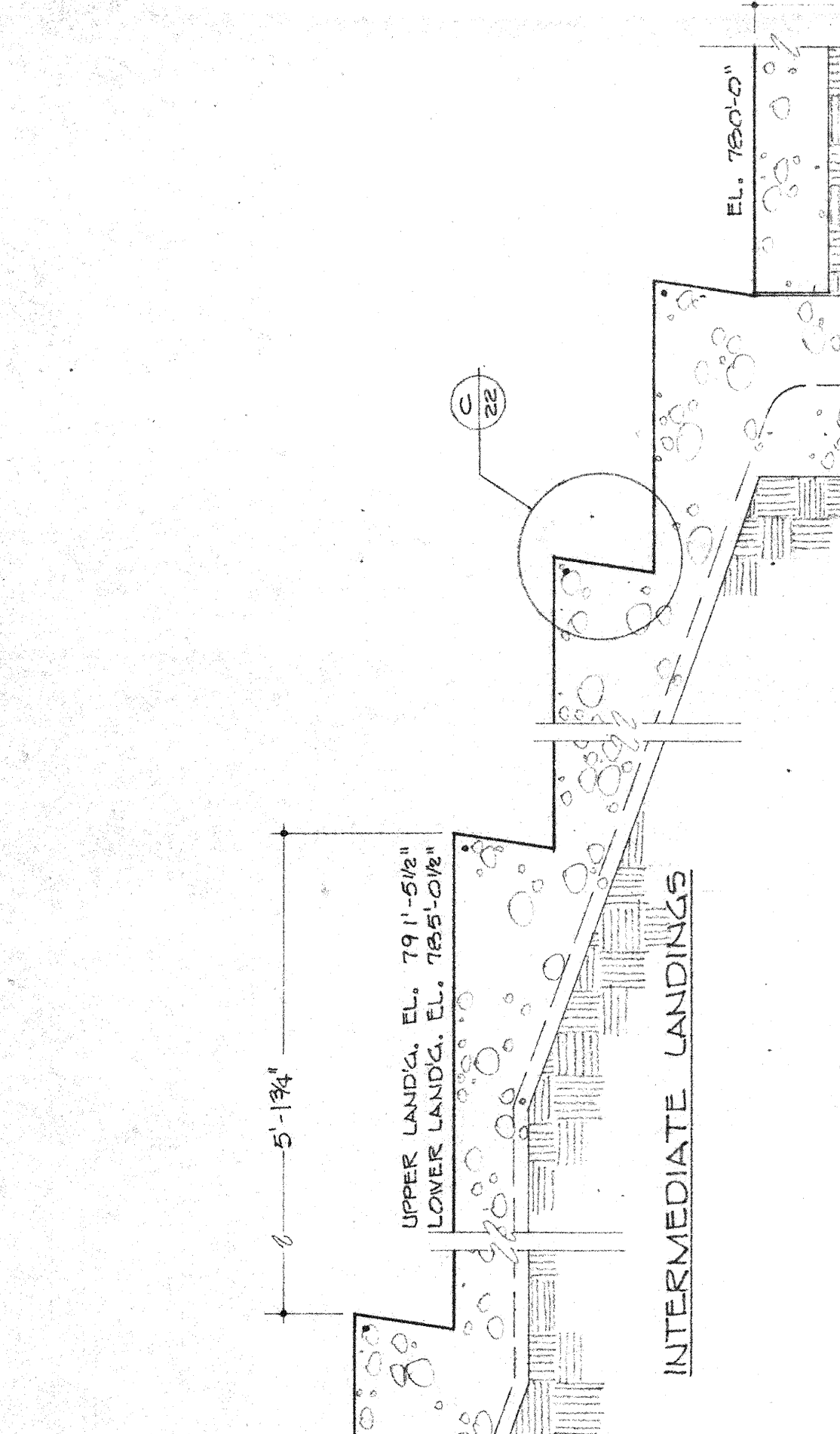
C TYPICAL TREAD & NOSING
NO SCALE



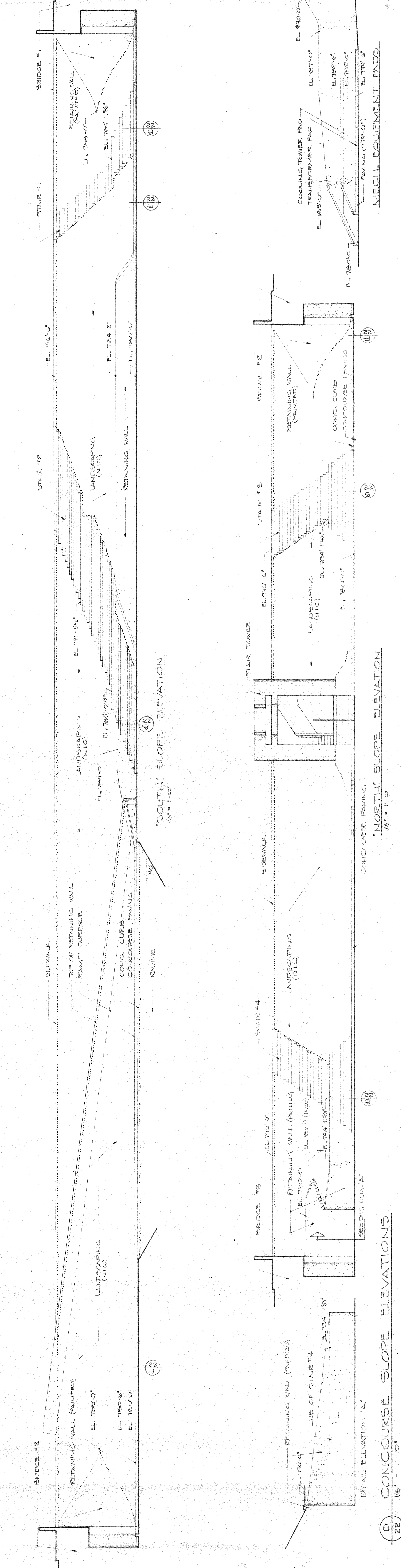
B EXTERIOR STAIRS #1, 3 & 4
1/8" = 1'-0"



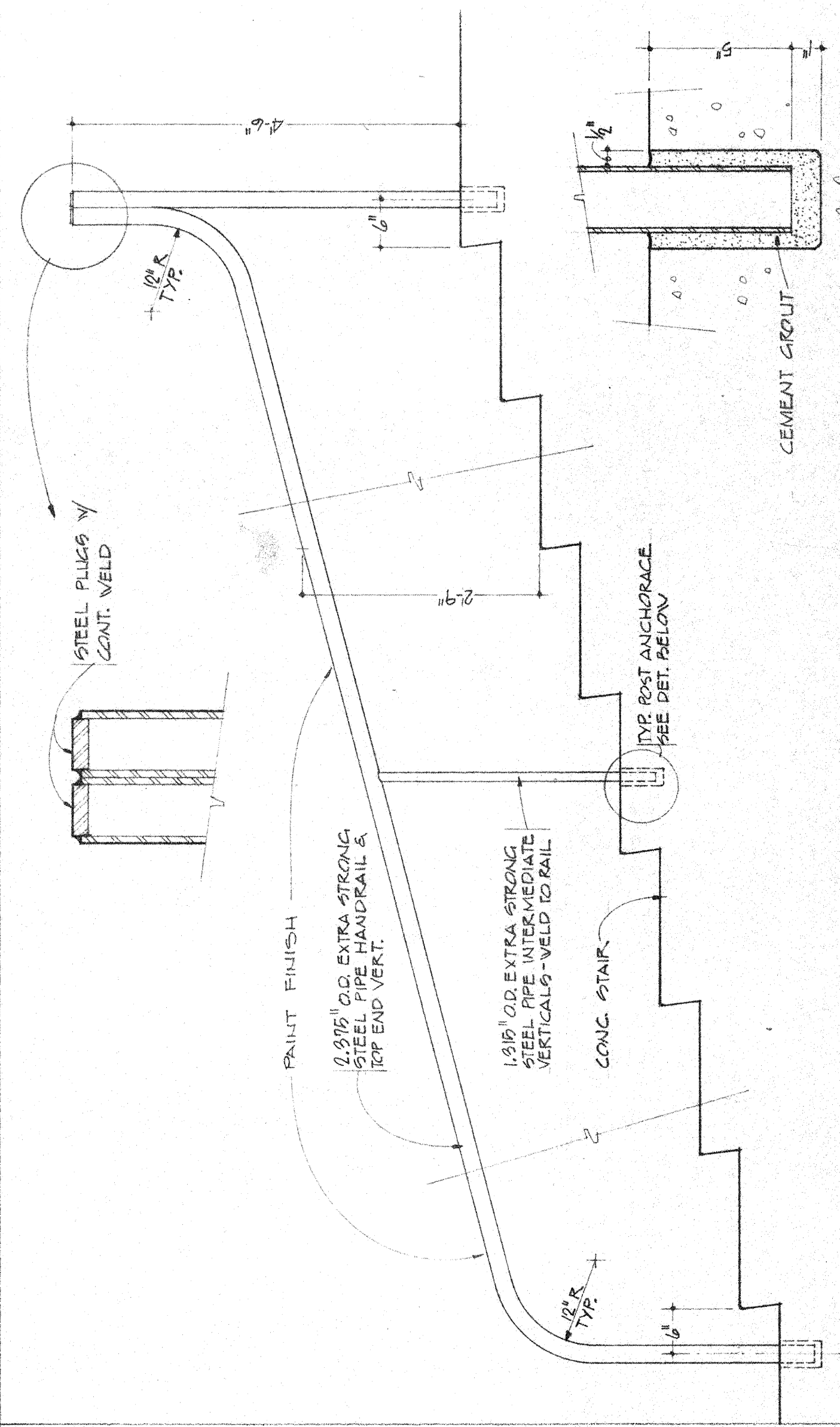
A EXTERIOR STAIR #2
1/8" = 1'-0"



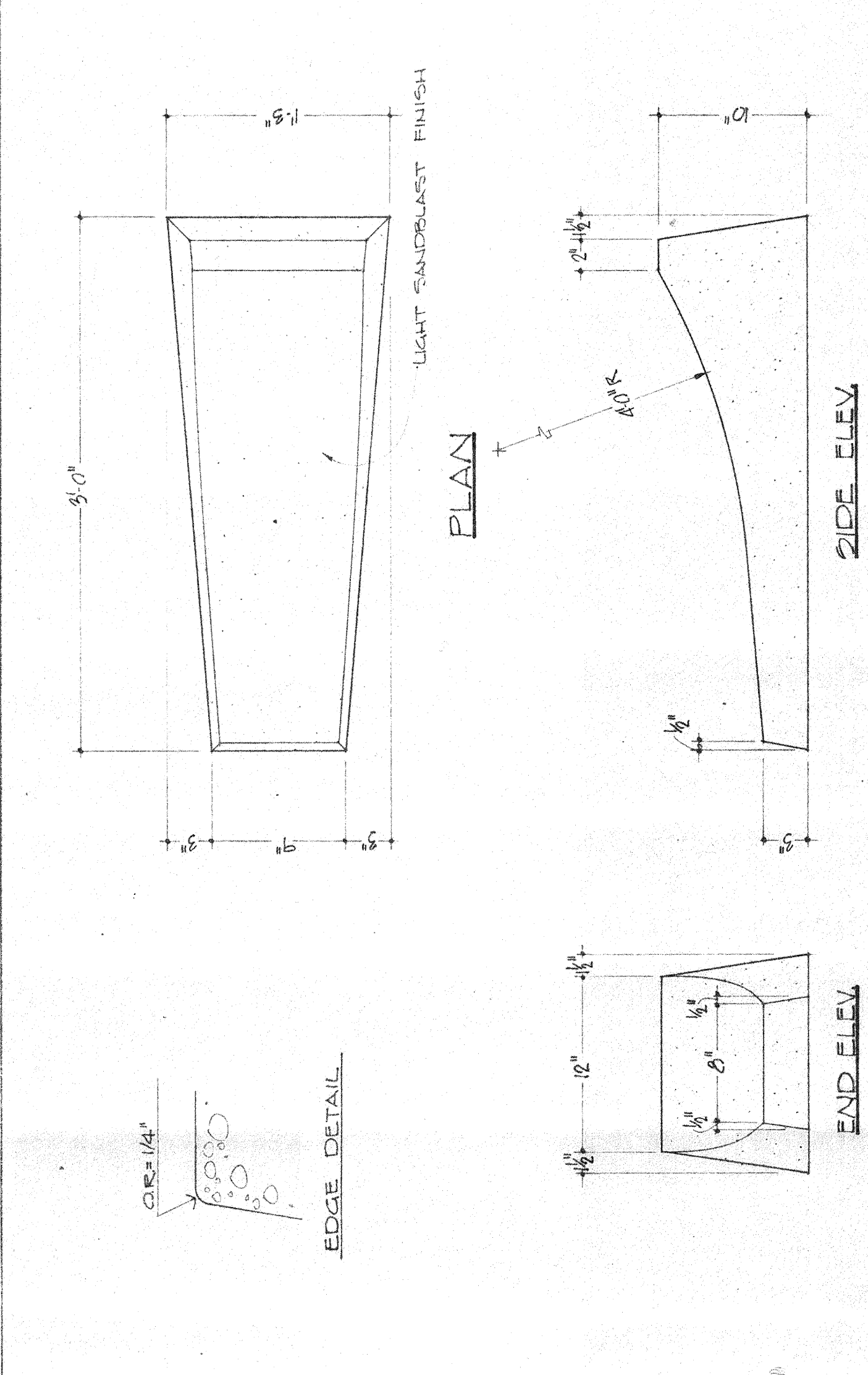
L INTERMEDIATE LANDINGS



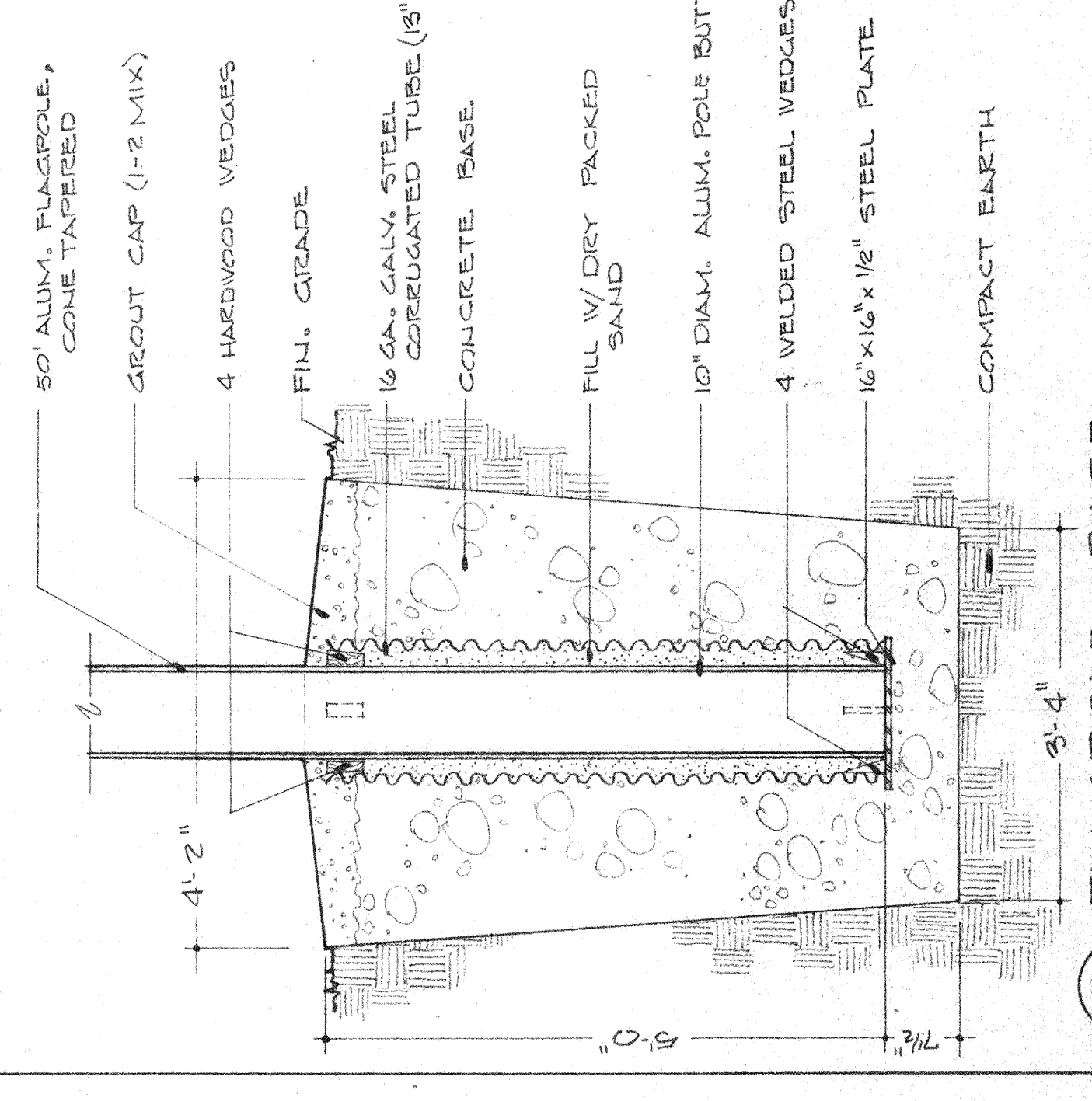
D CONCOURSE SLOPE ELEVATIONS
1/8" = 1'-0"



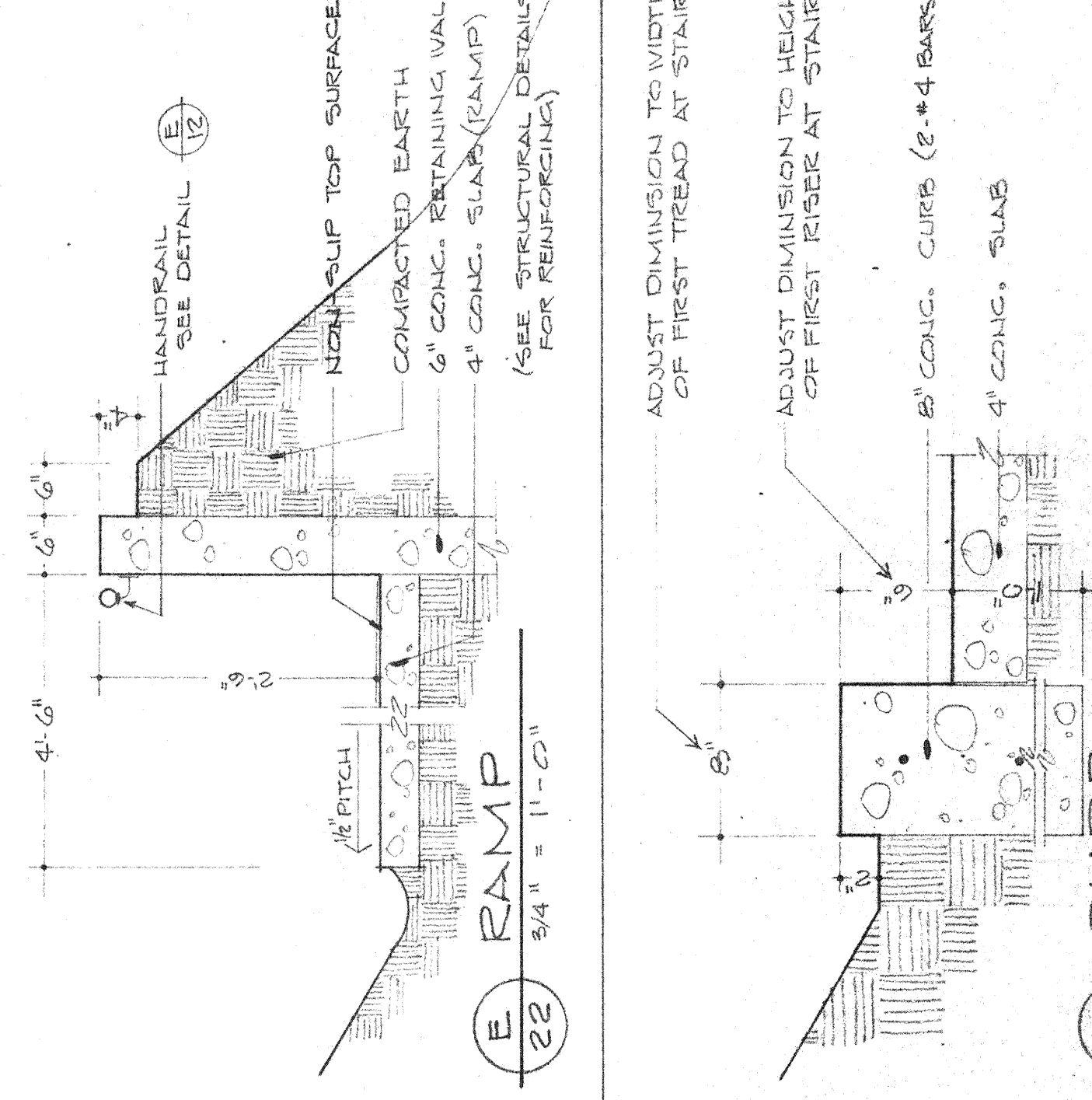
H PIPE RAILING DETAILS
SCALE: 3/4" = 1'-0"



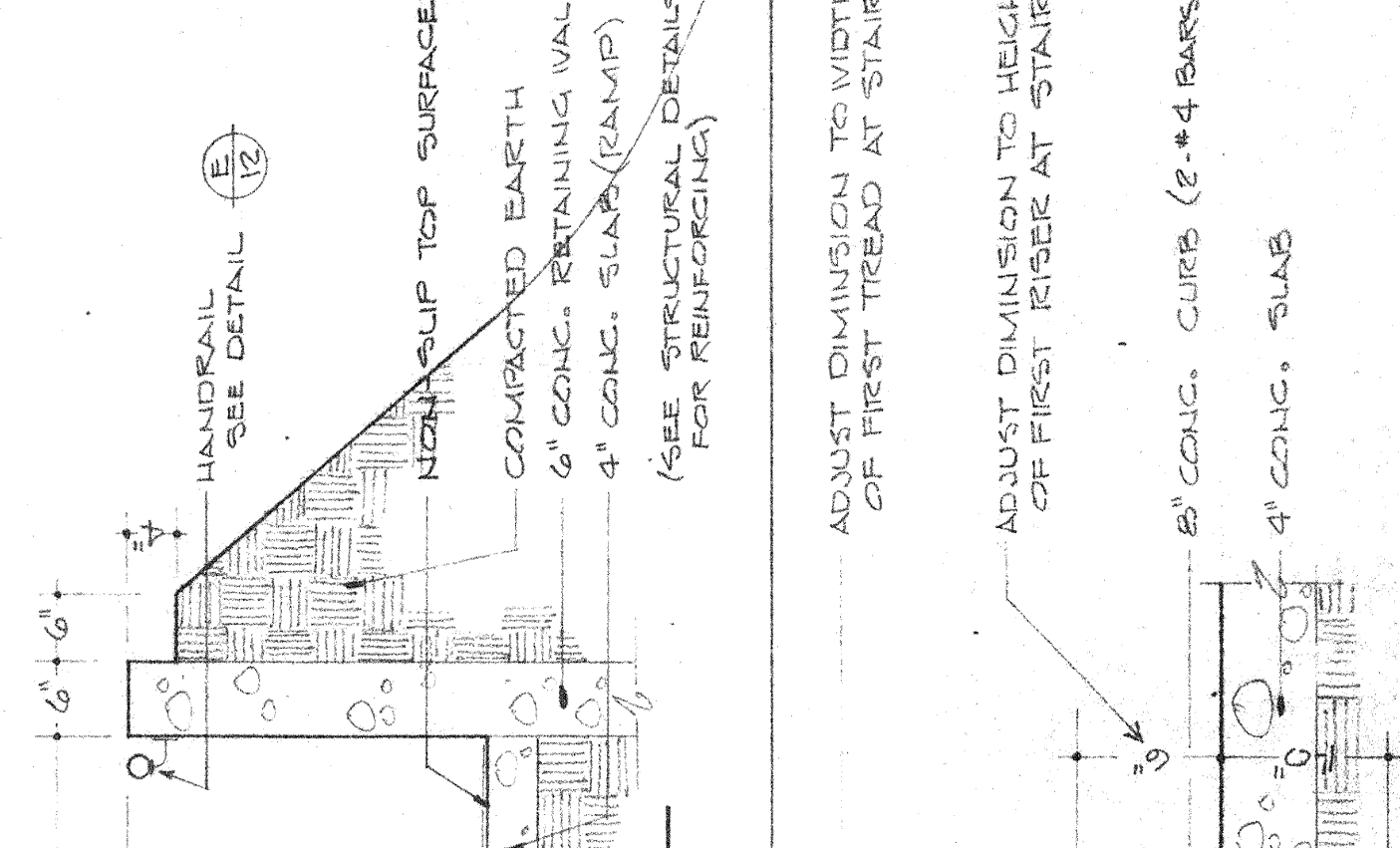
I PRE-CAST CONC. APRON BLOCK DET
SCALE: 1/4" = 1'-0"



C FLAGPOLE BASE
SCALE: 3/4" = 1'-0"



E RAMP
3/4" = 1'-0"



F CURB
1/2" = 1'-0"

A22
SHEET 40
REVISED

REVISIONS
DETAILS - EXTERIOR CONCRETE

ADJUST DIMENSION TO WIDTH OF FIRST TREAD AT STAIRS
ADJUST DIMENSION TO HEIGHT OF FIRST RISE AT STAIRS

NON-SLIP TOP SURFACE
CONCRETE EARTH
6" CONC. RETAINING WALL
4" CONC. SLAB (CONCIP)
(SEE STRUCTURAL DETAILS FOR REINFORCING)

50' ALUMI. FLAGPOLE, CONE TAPERED
GROUT CAP (1:2 MIX)
4 HARDWOOD WEDGES
FIN. GRADE
1/2" GALV. STEEL CORRUGATED TUBE (18")
CONCRETE BASE
FILL W/ DRY PACKED SAND
10" DIAM. ALUMI. POLE BUTT
4 WELDED STEEL WEDGES
1/2" X 1/2" X 1/2" STEEL PLATE
COMPACT EARTH

1 1/2" O.D. EXTRA STRONG STEEL PIPE INTERMEDIATE VERTICAL-WELD TO RAIL
CONC. STAIR
TYPE POST ANCHORAGE
FREE DET. BELOW
CEMENT GROUT
POST ANCHORAGE 3/4" DIA.

1 1/2" O.D. EXTRA STRONG STEEL PIPE INTERMEDIATE VERTICAL-WELD TO RAIL
CONC. STAIR
TYPE POST ANCHORAGE
FREE DET. BELOW
CEMENT GROUT
POST ANCHORAGE 3/4" DIA.

1 1/2" O.D. EXTRA STRONG STEEL PIPE INTERMEDIATE VERTICAL-WELD TO RAIL
CONC. STAIR
TYPE POST ANCHORAGE
FREE DET. BELOW
CEMENT GROUT
POST ANCHORAGE 3/4" DIA.

1 1/2" O.D. EXTRA STRONG STEEL PIPE INTERMEDIATE VERTICAL-WELD TO RAIL
CONC. STAIR
TYPE POST ANCHORAGE
FREE DET. BELOW
CEMENT GROUT
POST ANCHORAGE 3/4" DIA.

1 1/2" O.D. EXTRA STRONG STEEL PIPE INTERMEDIATE VERTICAL-WELD TO RAIL
CONC. STAIR
TYPE POST ANCHORAGE
FREE DET. BELOW
CEMENT GROUT
POST ANCHORAGE 3/4" DIA.